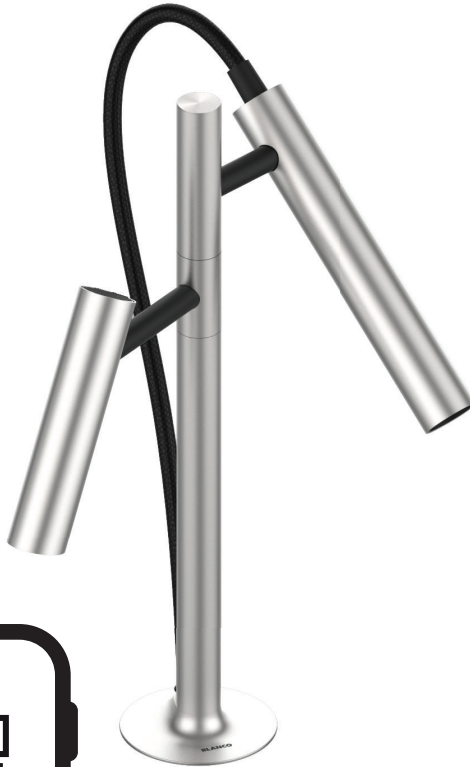


BLANCO CHOICE LUNEOO-S

User manual • 操作说明



blanco.com



English	User manual _____	3
中文	操作说明 _____	25

BLANCO GmbH + Co KG
Flehinger Str. 59
75038 Oberderdingen
Germany

Contents

1. About this manual	4
1.1 Customer service	4
1.2 Introduction	4
2. Safety	4
2.1 General information	4
2.2 Proper use	5
2.3 Restrictions on the user group	6
2.4 Safe use	6
3. Avoiding property damage	7
4. BLANCO CHOICE LUNEOO-S	8
4.1 Mixer tap	8
4.2 Control unit	9
5. Right control element – Tap water	10
5.1 Operating the mixer tap	10
5.2 Brief overview of the tap water operating element	11
5.3 Functions and states of the operating element in detail	12
5.4 Power supply in the base cabinet	14
6. Left control element – processed water	15
6.1 Operating the mixer tap	15
6.2 Processed water types (cold)	16
6.3 Processed water types (hot)	17
6.4 Settings on the quantity dial	19
6.5 LED ring indicator (processed water)	20
7. BLANCO UNIT App	21
8. Cleaning	22
9. Spare parts	22
10. Disposal/environment	23
10.1 Shutting down	23
10.2 Disposing of the mixer tap	23
11. Conformity	23
12. Plumbing Code of Australia (PCA)	23

1. About this manual

1.1 Customer service

We hope you enjoy using our system.

Our user manual is designed to ensure that you don't have any problems using your BLANCO CHOICE LUNE00-S mixer tap.

If you happen to have a question, simply get in touch with our BLANCO Customer Service.

→ You will find contact addresses on the back of this user manual.

You can also send us a message.

→ You can use the contact form on our website to write to us: **blanco.com**

1.2 Introduction

Dear User

Thank you for choosing the **BLANCO CHOICE LUNE00-S** mixer tap. This latest-generation mixer tap can dispense filtered, chilled, sparkling and boiling hot water alongside normal tap water.

The mixer tap impresses with its extraordinary design and exclusively electronic operation. The system is powered by a mains adapter and an integrated emergency power supply with batteries for protection in the event of a power failure.

Conventional tap water and the processed water types (still, medium, sparkling and hot water) are dispensed separately at two different points on the mixer tap.

The images and descriptions in this user manual are provided to aid understanding. Your product may differ from the images in some respects.

The installation instructions and set-up conditions can be found in the separate installation instructions. If you want to set up the product at a different location or no longer have the installation instructions available, contact the BLANCO customer service

→ Contact addresses can be found on the back of this manual.

2. Safety

2.1 General information

Please observe the following instructions.

This user manual is Part 3 of a total of 4 manuals.
You will find the manual number on the cover page of the document.



- ▶ Please read this manual and other manuals carefully before use to ensure safe usage of the product.
- ▶ Ensure that you follow the instructions and the work steps in the specified order.
- ▶ Observe the safety instructions and the installation requirements.
- ▶ Pay attention to the indicator elements on the components: the LEDs on the mixer tap and the display on the base cabinet unit.
- ▶ Keep the manuals and product information in a safe place ready to use at a later date or pass on to the subsequent owner.

2.2 Proper use

This mixer tap is suitable for use in private homes. It is designed for use in Australia and China, incl. Hongkong.

Use this mixer tap only:

- in conjunction with a BLANCO CHOICE base cabinet unit.
- in closed rooms in a home environment, usually the kitchen.

Any operation beyond the intended usage or any other use is considered misuse. BLANCO accepts no liability for any damage caused by misuse.

2.3 Restrictions on the user group

Children aged 8 or over and people with reduced physical, sensory or mental capabilities or lacking in experience and knowledge may only use the mixer tap under supervision or if they undergo a suitable briefing on safe usage and they are aware of the associated risks and hazards. Children must not play with the mixer tap. Children must not carry out cleaning or user maintenance without supervision.

2.4 Safe use



WARNING Danger posed by magnetic field!

The spray head holder and the spray head itself contain a strong magnet. This magnetic field can prevent a pacemaker from functioning properly!

- ▶ Individuals with a pacemaker should keep a distance of at least 25 cm.



CAUTION Risk of burns!

The outlet for hot water and the adjacent components may be very hot. The surface on parts of the mixer tap can also become very hot when hot water is dispensed continuously, especially in the section between the mixer tap body and the spout arm. Touching hot surfaces can cause burns.

- ▶ Do NOT touch the hot surfaces.
- ▶ Do NOT touch hot surfaces with your bare hands.
- ▶ When you need to swivel the outlet, take hold of the part which is coldest: the top end of the outlet.
- ▶ Leave hot surfaces to cool down.

 CAUTION Risk of scalding!

The system automatically releases hot water from the mixer tap during quantity calibration and also during the cleaning programme. The point in time when hot water is discharged is indicated in the manual. The system will also automatically discharge hot water from the mixer tap after an interruption in the power supply or if it is restarted. Hot water coming into contact with skin can cause scalding!

- ▶ Follow the instructions.
- ▶ Do not touch hot water and keep your distance.

The dispensed hot water may be very hot or hot water may continue to drip or trickle from the outlet. Hot water coming into contact with skin can cause scalding!

- ▶ Do not touch hot water and keep your distance.

3. Avoiding property damage

Damage and improper repairs can cause leaks and considerable property damage.

- ▶ Cables and hoses must be routed in such a way that they cannot be damaged. If you use a waste system, you must pay special attention and ensure that cables and hoses cannot become caught or damaged.
- ▶ Never put a damaged mixer tap into operation.
- ▶ Only trained specialists may repair the unit.
- ▶ Have damaged parts replaced by a professional.
- ▶ Only original spare parts may be used to repair the unit.

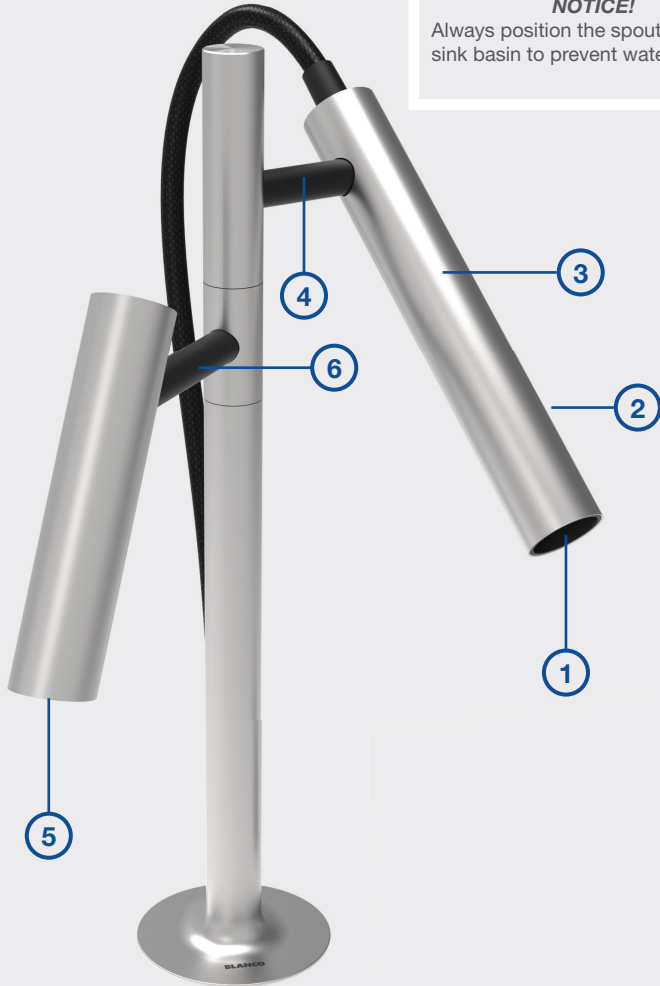
Discolouration may arise if boiling water is allowed to splash onto the same spot on composite kitchen sinks on a constant basis.

- ▶ Reduce temperature.
- ▶ Collect any hot water in a container.

4. BLANCO CHOICE LUNE00-S

4.1 Mixer tap

NOTICE!
Always position the spout above the sink basin to prevent water damage!



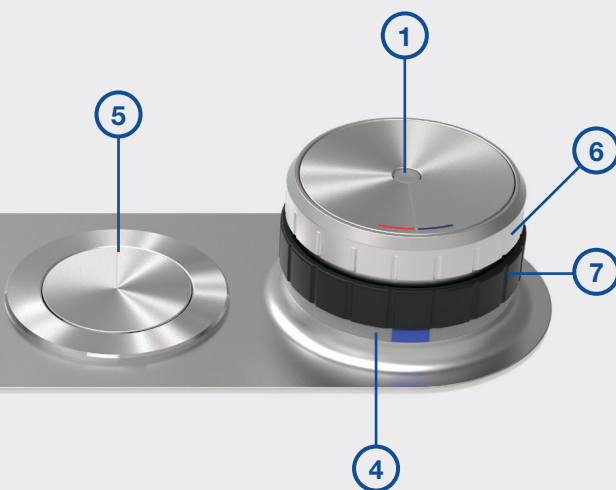
- 1 Outlet tap water
- 2 On the back of the spray head:
Switch button for changing between jet types
- 3 Removable spray head with tap water outlet
- 4 Rotating and swivelling spray head holder
- 5 Outlet processed water types (still/medium/sparkling and hot water)
- 6 Rotatable holder of processed water outlet

4.2 Control unit

Control element for
processed water



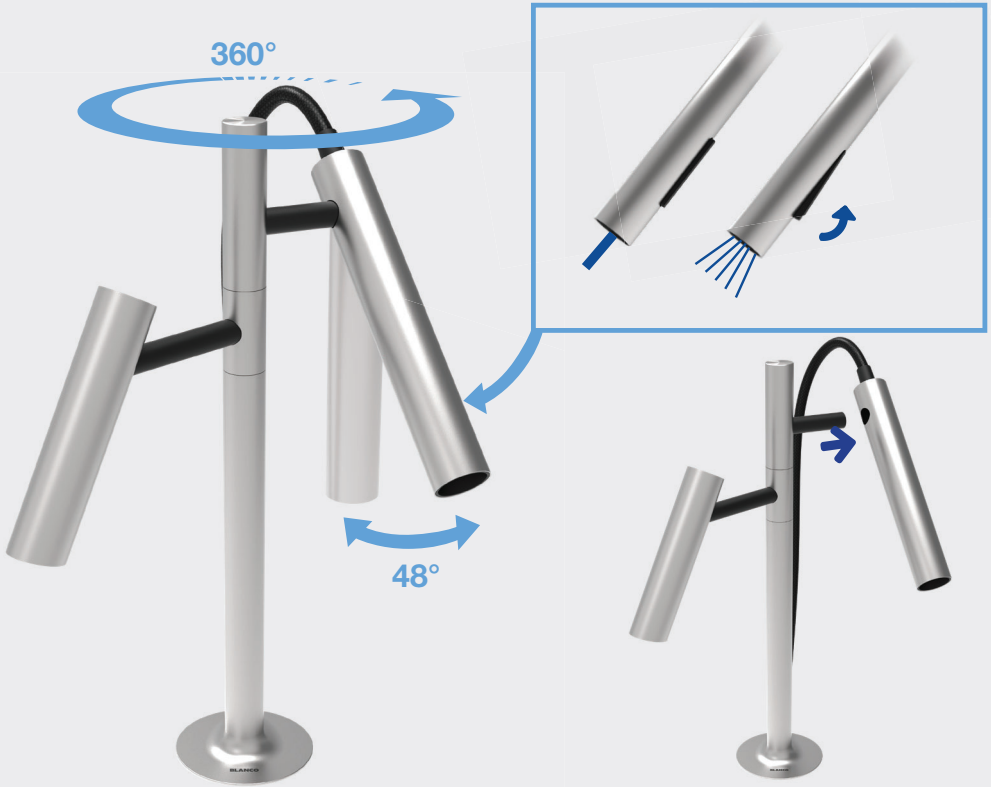
Control element for
tap water



- 1 Touch operation actuator (sensor)
- 2 Rotatable dial to choose the processed water type
- 3 Rotatable dial to select quantity
- 4 LED ring
- 5 BLANCO Push-Control drain remote control (optional)
- 6 Dial for temperature setting (tap water)
- 7 Dial for flow rate setting (tap water)

5. Right control element – tap water

5.1 Operating the mixer tap



NOTICE!
Do not kink or twist the spray hose! The spray hose is adjustable in length, but cannot be pulled out.

Control the mixed water / tap water (right outlet - spray head) only with the **right** control element.



5.2 Brief overview of the tap water operating element

Press: Quick start

Pressing the upper temperature selector dial starts the flow of water at a preset volume and temperature. You can customise these pre-settings to suit your needs.

Touch: Cold start & pause

Cold start: A light touch of the touch sensor starts the water flow with cold water at 1/4 of the maximum flow rate – ideal for washing hands.

Pause mode: While the water is running, a touch of the touch sensor switches the mixer tap to pause mode. The last volume and temperature called up is saved for 30 seconds here. It can be restarted by touching the touch sensor again.

Temperature selector dial

Enables the water temperature to be set – even before the water is turned on.

Volume selector dial

Enables the flow rate to be set.

You can also simply "turn the water on and off" here.

LED indicator

Indicates the current water temperature and provides information on other states, such as deactivation while the cleaning function is active.


Simple and intuitive:

- First set the temperature (turn at the top).
- Then start the water (turn at the bottom).

More information and detailed functions can be found on the following pages.


5.3 Functions and states of the operating element in detail

Standby



Touch

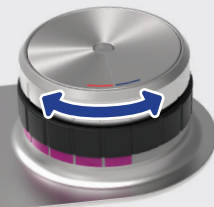
A light touch of the infrared touch sensor starts the flow of water at the spray head with the standard setting. This is always 'cold with a flow rate of 1/4'.



Click

Pressing the upper selector dial starts the flow of water with a setting saved in advance. This is 'cold with a flow rate of 1/4' upon delivery.

Temperature




Turning the upper selector dial changes the temperature of the water in seven increments from 'cold' to 'hot'.

The colour of the circumferential LED indicator changes between blue and red here.

The desired temperature can also be set when the water is not running.

Info:
If no changes are made to the temperature or volume at the operating element for 5 minutes while the water is running, the mixer tap automatically switches to pause mode.

Volume




Turning the lower selector dial changes the flow rate from 'off' to 'completely open' in eight increments.

The indicator does not change here.

The mixer tap can also be 'opened/closed' by turning the flow rate selector dial. You can therefore use this to switch off the flow of water completely or start the flow of water.

When the mixer tap is in pause mode, turning the flow rate selector dial reactivates the previous setting.

Pause



When the water is running, a light touch of the infrared touch sensor stops the flow of water. The front LED lights up in the colour of the last set temperature. The mixer tap is now in pause mode for 30 seconds.

The last setting used (temperature and flow rate) can be started again by lightly touching the infrared touch sensor again.

After the 30 seconds have elapsed, the LED goes out and the mixer tap switches to standby mode.

Saving the setting



If the water is running and you press the upper dial for longer than 2 seconds, the current setting (temperature and flow rate) is saved. The ring flashes white twice to signal confirmation.

In future, the mixer tap will start from standby with this saved setting when you briefly press the upper selector dial once.

Energy supply malfunction



If the front LED flashes red, there is a problem with the energy supply and all functions are deactivated (→ see next page).

Cleaning



If you press and hold the upper selector wheel for longer than 5 seconds in standby mode, the mixer tap switches to the cleaning function. The front LED then lights up yellow.

The operating element is deactivated for 30 seconds while the cleaning function is active. Turning/pressing the selector wheels or touching the touch sensor will not make water flow out. After the 30 seconds have elapsed, the mixer tap switches back to standby mode.

The cleaning function can be switched off by pressing the upper selector wheel again for 5 seconds.

NOTICE!

Activating cleaning mode affects the output of mixed water only! If you wish to deactivate both water types so that you can clean, you also need to switch the left-hand operating element to cleaning mode (set quantity dial to 0).

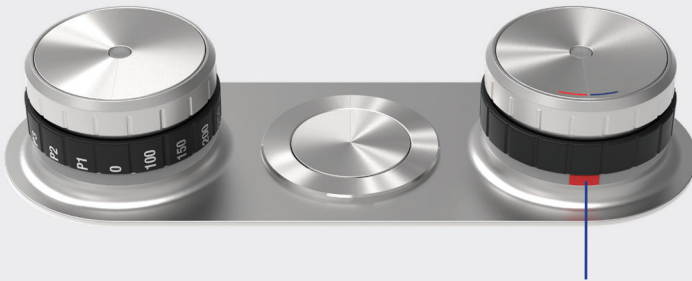
5.4. Power supply in the base cabinet

The power supply consists of a mains adapter and an emergency power supply with batteries, which ensures that the flow of water is stopped in the event of a power failure.

NOTICE!

In order for the mixer tap to function properly, both the mains adapter and the batteries in the battery box must have a sufficient supply of energy!

If one of the two energy sources (mains adapter or battery box) fails as an energy supplier, the mixer tap will indicate this with a flashing red LED. The mixer tap can then no longer be operated. In this case, please check both the functioning of the mains adapter and the energy level of the batteries. Replace the batteries if necessary.



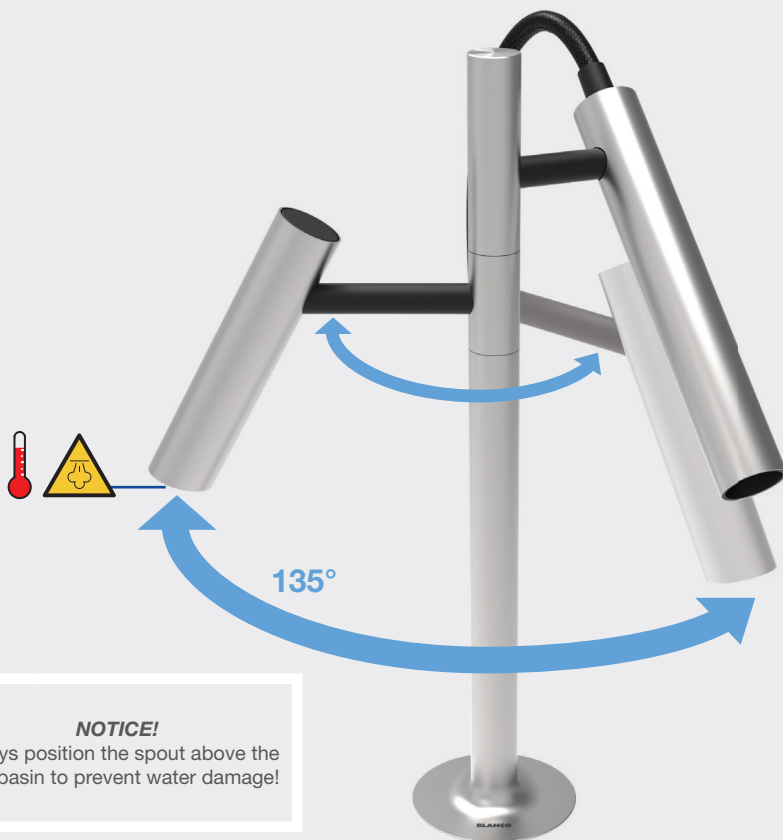
Indicator LED flashes red: Energy supply malfunction

Six batteries of type AA/LR6 are required.



6. Left control element – processed water

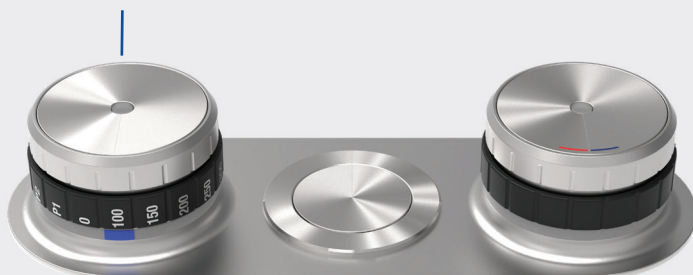
6.1 Operating the mixer tap



NOTICE!

Always position the spout above the sink basin to prevent water damage!

Control processed water
(left outlet) only with the
left control element.



6.2 Processed water types (cold)

NOTICE! Depending on the base cabinet unit chosen, not all water types (colours) may be available on the mixer tap!

Cold



Turn the upper rotating dial on the left control unit to select cold water type

Blue



1 sec



Sparkling water

Turquoise



1 sec



Medium sparkling water

Green



1 sec



Still water



Use the touch sensor on the left control unit to activate water dispensing.



You can stop the water flow at any time using the left sensor.

The system purges with still water briefly at the end or if dispensing of sparkling water is interrupted.

6.3 Processed water types (hot)

NOTICE! Depending on the base cabinet unit chosen, not all water types (colours) may be available on the mixer tap!



CAUTION Risk of scalding!

The dispensed hot water may be very hot or hot water may continue to drip or trickle from the outlet. Hot water coming into contact with skin can cause scalding!

► Do not touch hot water and keep your distance.

Hot



Press the upper rotating dial on the left control unit and turn twice to select hot water



1 sec



Use the touch sensor on the left control unit to activate hot water dispensing function.





Hot water can be dispensed for 10 seconds after activating hot water mode by pressing and turning two notches. The system then switches back to the previously selected water type (cold).

You can stop the water flow at any time using the touch sensor on the left control unit.

CAUTION Risk of burns!

The outlet for hot water and the adjacent components may be very hot. The surface on parts of the mixer tap can also become very hot when hot water is dispensed continuously, especially in the section between the mixer tap body and the spout arm. Touching hot surfaces can cause burns!

- ▶ Do NOT touch the hot surfaces.
- ▶ Do NOT touch hot surfaces with your bare hands.
- ▶ When you need to swivel the outlet, take hold of the part which is coldest: the top end of the outlet.
- ▶ Leave hot surfaces to cool down.

6.4 Settings on the quantity dial



Selection of water quantity



You can optimise the dispensing quantities using your base cabinet unit calibration function. Please refer to the user manual for your base cabinet unit for more information.

Even after full optimisation, the dispensing quantities, especially for hot water, may vary to a certain extent. This is due to technical reasons.



Left control unit is off.



If the quantity dial is set to '0' the left control unit is deactivated and it is not possible to dispense processed water, but the base cabinet unit continues to heat and cool.

You can use this setting to clean the mixer tap to prevent accidental water discharge.

NOTICE! Switching off the left-hand operating element affects the output of processed water only! If you wish to deactivate both water types so that you can clean, you also need to switch the right-hand operating element to cleaning mode (press top dial and hold down for 5 seconds).



P1 to P4

You can use the BLANCO UNIT app to indicate a specific water quantity and type for each position on the rotating dial (P1 to P4). You can then use the sensor to start dispensing water.

If the water type is set to 'Hot water' in the BLANCO UNIT app, you must unlock the safety mechanism (by simultaneously pressing and turning past two notches) before dispensing water.

For more information on the BLANCO UNIT app → see page 21.



6.5 LED ring indicator



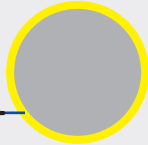
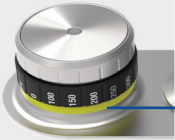
The remaining filter service life or remaining CO₂ capacity has reached a level of less than 10%. As a result, you will soon need to replace the CO₂ cylinder or clean and change the filter (see display on the base cabinet unit).



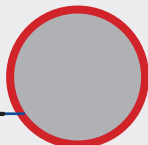
The remaining filter service life or remaining CO₂ capacity has come to an end. As a result, you now need to replace the CO₂ cylinder or clean and change the filter (see display on the base cabinet unit).



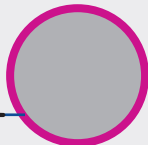
Cleaning programme is running.



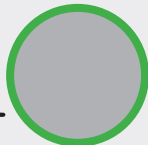
Cleaning programme is running. User action required (see display on the base cabinet unit).



System fault/'Error'
(see display on the base cabinet unit).



System is in menu mode
(see display on the base cabinet unit).



Initialisation is running
(see display on the base cabinet unit).

7. BLANCO UNIT App

Using the BLANCO UNIT app

The BLANCO UNIT app enables connection to compatible BLANCO products, providing you with additional features such as support for operation, maintenance, and care. You can easily contact BLANCO Service directly via the BLANCO UNIT app.

The BLANCO UNIT app allows you to control the system even more effectively and provides you with other setting options, such as:

- Customised settings for quantities and water types
- Ordering consumables directly on your mobile device
- Hot water block to switch off the hot water function
- Error messages and notifications directly on your mobile device in real time
- Carrying out cleaning and filter changes assisted by graphics directly on your mobile device
- and much more...!



The software is available from the iOS App Store and Android Store.



You will find further information on using the app in the description of the BLANCO UNIT app.

Google Play and the Google Play logo are Google LLC trademarks; Apple and the Apple logo are Apple Inc. trademarks, both registered in the United States and other countries.

8. Cleaning

You can wipe the outside of the control box and the and the battery box in the base cabinet with a damp cloth, but not the plugged in power plug! Make sure that no water enters the system and that the power supply connection terminals do not get wet.

Do not use any abrasive or chlorine-based cleaning agents to clean the surfaces. It is recommended to use the cleaning agents indicated by BLANCO to clean the mixer tap. You can order these conveniently from the BLANCO Shop online.



blanco.com/care-luneoo

In order to avoid unwanted water dispense during cleaning, the mixer tap has a cleaning function that deactivates the sensors.

→ See page 13 (tap water)

→ See page 19 (processed water)

9. Spare parts

Enter your model code to find spare parts in the BLANCO Shop at blanco.com. You will find the code on the cold water hose.

If you happen to have a question, simply get in touch with our BLANCO Customer Service.

→ You will find contact addresses on the back of this manual.



blanco.com/shop-luneoo

10. Disposal/environment

10.1 Shutting down

The shutdown process is described in the installation instructions.
→ See Section 5 'Shutting down' in manual no. 1.

Always have such work handled by trained specialists!



10.2 Disposing of the mixer tap

You are legally obliged to avoid generating waste and protect your health and the environment:

- ▶ Return the product to a collection point. Do NOT dispose of the product in general household waste.



11. Conformity

The system complies with the requirements specified in the applicable directives and guidelines.

You can request a declaration of conformity from BLANCO.

12. Plumbing Code of Australia (PCA)

WARNING – FOR CONTINUED SAFETY OF THIS APPLIANCE IT MUST BE INSTALLED, OPERATED AND MAINTAINED IN ACCORDANCE WITH THE MANUFACTURER'S INSTRUCTIONS.

WARNING – FOR CONTINUED SAFETY OF THIS APPLIANCE IT MUST BE INSTALLED IN ACCORDANCE WITH THE PLUMBING CODE OF AUSTRALIA (PCA).

WARNING – THIS APPLIANCE MAY DELIVER WATER AT HIGH TEMPERATURE. REFER TO THE PLUMBING CODE OF AUSTRALIA (PCA), LOCAL REQUIREMENTS AND INSTALLATION INSTRUCTIONS TO DETERMINE IF ADDITIONAL DELIVERY TEMPERATURE CONTROL IS REQUIRED.

内容

1. 关于这份使用说明书	26
1.1 客户服务	26
1.2 引言	26
2. 安全	126
2.1 常规提示	26
2.2 产品使用范围	27
2.3 用户群体限制	28
2.4 使用注意事项	28
3. 避免财产损失	29
4. BLANCO CHOICE LUNEOO-S	30
4.1 龙头	30
4.2 出水类型的控制组件	31
5. 右侧控制组件-自来水	32
5.1 龙头的操作	32
5.2 自来水操作组件简要概述	33
5.3 详细说明操作组件的功能和状态	34
5.4 底柜中的电源	36
6. 左侧控制组件-饮用水	37
6.1 龙头的操作	37
6.2 出水类型 (冷)	38
6.3 出水类型 (热)	39
6.4 水量选择轮的设置	41
6.5 LED 环的显示 (饮用水)	43
7. BLANCO UNIT App	43
8. 清洁	44
9. 备件	44
10. 废弃处置/环境保护	45
10.1 停止使用	45
10.2 龙头的废弃处理	45
11. 合规性	45

1. 关于这份使用说明书

1.1 客户服务

祝您在使用产品时收获愉悦的体验。

我们的操作说明书旨在帮助您顺利使用 BLANCO CHOICE LUNEEO-S 龙头。

如果仍然有疑问，您只需联系我们的 BLANCO 客户服务。

→ 联系地址见本说明书末页。

您也可以书面方式联系我们。

→ 为此，请使用我们网站上的联系表：blanco.com

1.2 引言

尊敬的用户：

非常感谢您选择 **BLANCO CHOICE LUNEEO-S** 龙头！它是最新一代的龙头，除自来水外，还可提供经过过滤并冷却、添加气泡或加热的饮用水。

此款龙头因其非凡的设计和独特的电子操作元件给人留下深刻的印象。该系统由一个电源适配器和一个集成电池的应急电源供电，以便在电源故障时提供保护。

传统的自来水和饮用水（无气泡冷水/中气泡水/高气泡水和热水）分别从龙头上的两个不同位置排出。

说明书里的插图和说明便于用户理解。您购买的产品可能在某些部位与图示有所差异。

您可以在单独的安装说明书里找到相应的安装指南。如果您想将产品安装在其它位置，或者无法找到安装说明书，请联系 BLANCO 客户服务部门 → 联系地址可在本说明书末页找到。

2. 安全

2.1 常规提示

请遵守下列安全提示。

这份操作说明书是总共4份说明书中的第3部分。文档的扉页上注有说明书的编号。



- ▶ 为确保安全地使用产品，请在使用产品前仔细阅读本说明书和其他说明。

- ▶ 请确保遵循说明书的顺序和操作步骤顺序。
- ▶ 请遵守安全提示和安装规定。
- ▶ 注意组件的显示元件：龙头上的 LED 指示灯和底柜单元的显示屏。
- ▶ 保存好说明书和产品信息，以备日后使用或下一位所有者参考。

2.2 产品使用范围

本龙头适合在私人家庭环境里使用。它专为在澳大利亚和中国(包括香港)使用而设计。

使用本龙头的前提条件是：

- 与 BLANCO CHOICE 底柜单元一起使用。
- 在家庭环境的封闭房间里使用，通常是厨房。

任何违背或超出指定用途范围的使用方式均被视作滥用。对于因滥用而造成的损坏/损失，BLANCO 不承担任何责任。

2.3 用户群体限制

8岁或以上的儿童以及身体、感官或精神能力下降或缺乏经验和知识的人只能在监督下使用本龙头，或者如果他们接受了关于安全使用龙头的适当指导，并且理解了相关的风险和危害后，则也可以自行使用本龙头。不允许将龙头当作儿童的玩具。儿童不得在没有监督的情况下对本龙头进行清洁或维护。

2.4 使用注意事项

**警告****强磁危险!**

花洒头支架和花洒头含有强磁铁。这种磁场会影响心脏起搏器的功能!

- ▶ 装有心脏起搏器的人员应保持至少25厘米的距离。

**CAUTION****灼伤危险!**

热水出水口和其相邻的零件可能非常热。连续放出热水后，龙头的零件表面也会变得烫手，特别是龙头本体和出水管之间的部分。接触高温表面会导致灼伤!

- ▶ 不要接触高温表面。
- ▶ 切勿徒手接触高温表面。
- ▶ 当你需要旋转出口时，抓住最冷的部分：出水口的顶端。
- ▶ 让热的表面冷却。

**小心****烫伤危险!**

在安装过程以及清洁程序中的多个时间点,设备会自动从龙头排出热水。这些时间点说明书中都有注明。在供电中断或重新启动时,设备也会自动从龙头放出热水。热水接触皮肤会造成烫伤!

- ▶ 按照手册中的说明进行操作。
- ▶ 不要接触热水,并保持距离。

排出的热水可能很烫,或者热水会以细流或滴落的方式从龙头出水口流出。热水接触皮肤会造成烫伤!

- ▶ 不要接触热水,并保持距离。

3. 避免财产损失

设备零件损坏或不正确的维修方式都可能导致泄漏和严重的财产损失。

- ▶ 在敷设电缆和软管时,必须确保不会出现损坏。若有使用垃圾处理系统,尤其要注意不能卡住或损坏电线和软管。
- ▶ 切勿使用已损坏的龙头。
- ▶ 只有经过培训的专业人员才能对龙头进行维修。
- ▶ 请专业人员更换损坏的部件。
- ▶ 修理龙头时,只能使用原装备件。

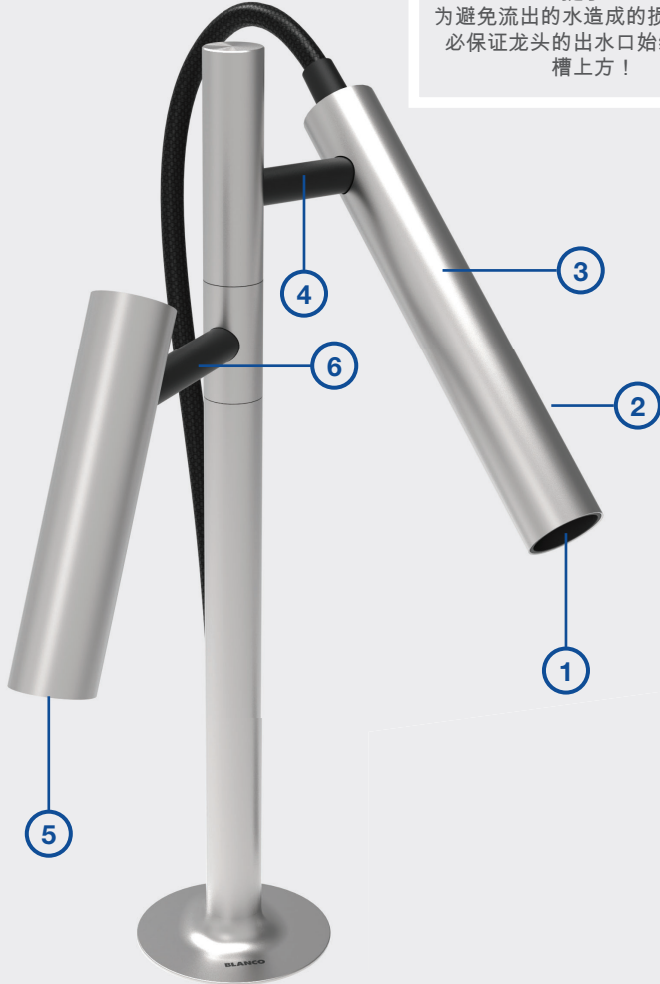
如果连续地向花岗岩水槽中同一位置注入沸水,可能导致水槽变色。

- ▶ 降低温度
- ▶ 用容器收集热水

4. BLANCO CHOICE LUNE00-S

4.1 龙头

提示：
为避免流出的水造成的损失，请务必保证龙头的出水口始终位于水槽上方！



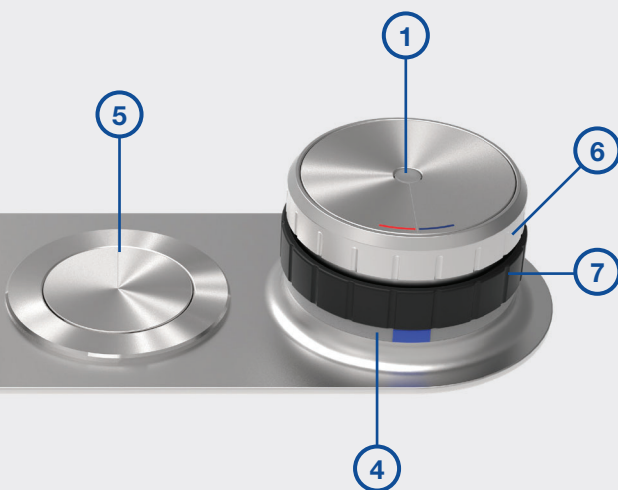
- 1 混合水/自来水
- 2 在抽拉头的背面：
用于改变水型的切换按钮
- 3 可抽拉自来水抽拉头
- 4 可旋转抽拉头支架
- 5 饮用水出水类型（无气泡冷水/中气泡水/高气泡水和热水）
- 6 可旋转饮用水出水口

4.2 出水类型的控制组件

饮用水控制组件



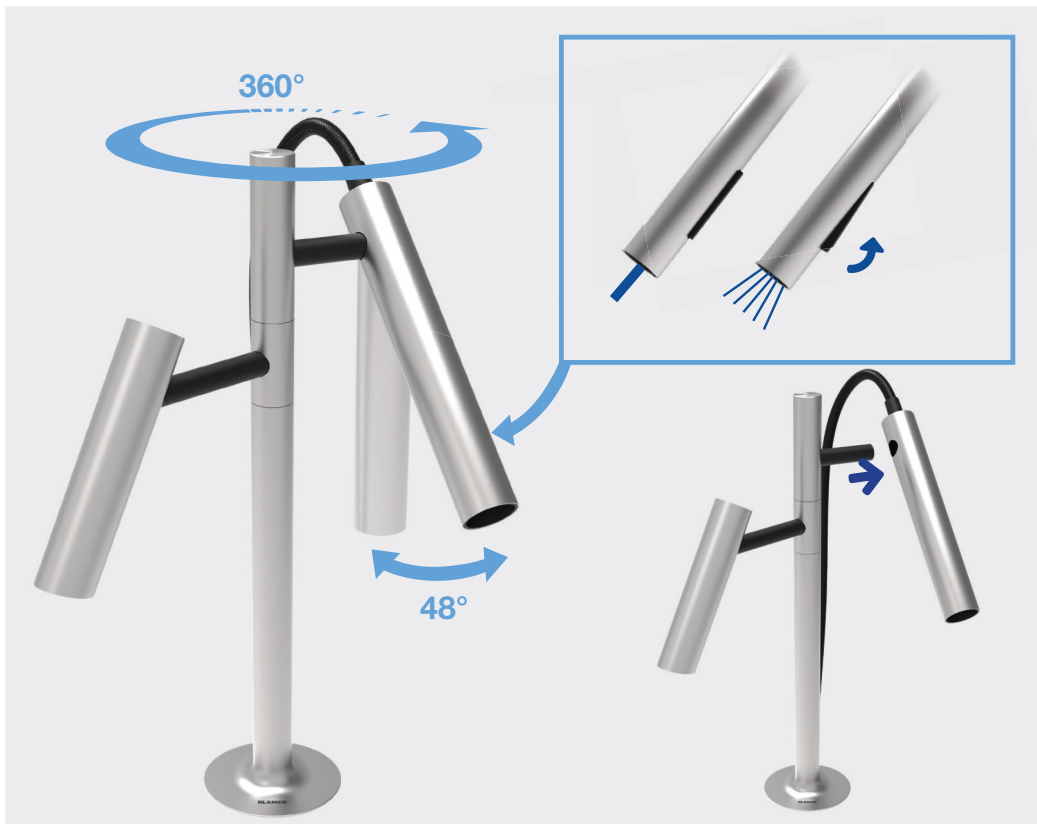
自来水控制组件



- 1 触摸操作元件 (传感器)
- 2 饮用水模式选择转轮
- 3 水量转轮
- 4 LED 灯环
- 5 BLANCO 台控组件 (可选)
- 6 温度选择转轮 (自来水)
- 7 流量选择转轮 (自来水)

5. 右侧控制组件-自来水

5.1 龙头的操作



提示:
不要将抽拉软管弯折或扭结！
抽拉软管可以活动但不可以伸缩。

只需要使用右侧控制组件即可控制自来水



5.2 自来水操作组件简要概述

按压：快速开启

按下上层温度选择轮，以预设的水量和温度出水。您可以自定义这些预设以满足您的需要。

触摸：冷启动&暂停

冷启动：轻触传感器以1/4最大水流量开启冷水-非常适合洗手。

暂停模式：当正在出水时，触摸传感器龙头进入暂停模式。此模式中会将上次出水温度和流量暂时记忆30秒，再次触摸传感器可以再次开启水流。

温度选择轮

能够选择出水温度-甚至在龙头未出水的情况下。

流量选择轮

能够选择出水流量。

你可以使用此功能“简便的”进行龙头的开关。

LED 指示灯

指示当前水温和提供其他信息。例如：当清洁模式开启的时候控制组件暂时失效。

简单和便捷：

- 首先设置温度（选择上方手轮）
- 然后开始出水（选转底部手轮）

更多信息和详细功能描述见下页。

5.3 详细说明操作组件的功能和状态

待机



触摸

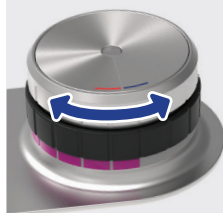
轻触红外传感器激活自来水出水口以默认方式出水：
1/4最大流量的冷水。



按压

按压上部份温度选择轮开始以预设模式出水。
这是以1/4最大水流量开启的冷水。

温度



转动上部分温度选择轮改变水温，从冷水到热水共有7个温度选择。

LED指示灯环的颜色在蓝色和红色之间变化。

当龙头不出水时同样可以设定温度。

提示：

若出水持续5分钟且期间无温度和流量的操作，龙头将自动进入暂停状态。

流量



选择下面的流量选择轮改变流量，从关闭到完全打开一共8个档位。

指示灯的显示不变。

龙头同样能够使用此转轮进行开关。您可以用此转轮完全关闭或者打开水流。

在暂停模式下，打开流量选择轮能够激活预设的水流。

暂停



在出水时轻触红外传感器暂停水流。LED指示灯将显示上次设置的温度，龙头进入暂停模式30秒。

龙头同样能够使用此转轮进行开关。您可以用此转轮完全关闭或者打开水流。

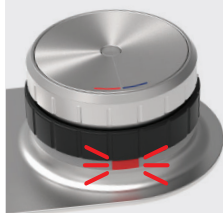
30秒过后，LED指示灯灭且龙头进入待机模式。

保存设置



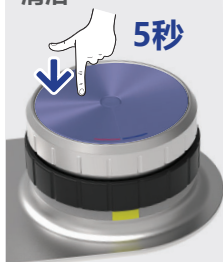
在出水时按住上部份手轮2秒以上，可保存当前设置（温度和流量）。LED 指示灯白色闪烁两次表示保存完成。

供电故障



若LED 红灯闪烁表示供电异常，此时所有功能将停止（见下一页）。

清洁



在待机模式下按住选择轮5秒以上，龙头进入清洁模式。LED 黄灯常亮。

在清洁模式下龙头的控制组件将停止工作30秒，此时旋转或按压选择轮不会控制龙头出水。30秒过后龙头恢复待机状态。

长按控制组件5秒以上可主动退出清洁模式。

提示：

激活清洁模式只能暂停自来水出水口！若希望暂停饮用水出水口您也需要操作左侧把手（将左侧水量选择轮调至0）

5.4. 底柜中的电源

电源由一个电源适配器和一个带电池的电池盒组成，这是为了确保当供电异常时龙头可以停止水流。

提示：

为了使龙头正常工作，电源适配器和电池盒中的电池都必须有足够的电量供应！

若电源适配器和电池盒其中一个电量不足，LED 指示灯闪烁红灯，龙头将无法操作。此时，请确认电源适配器和电池电量，如果需要请及时更换电池。



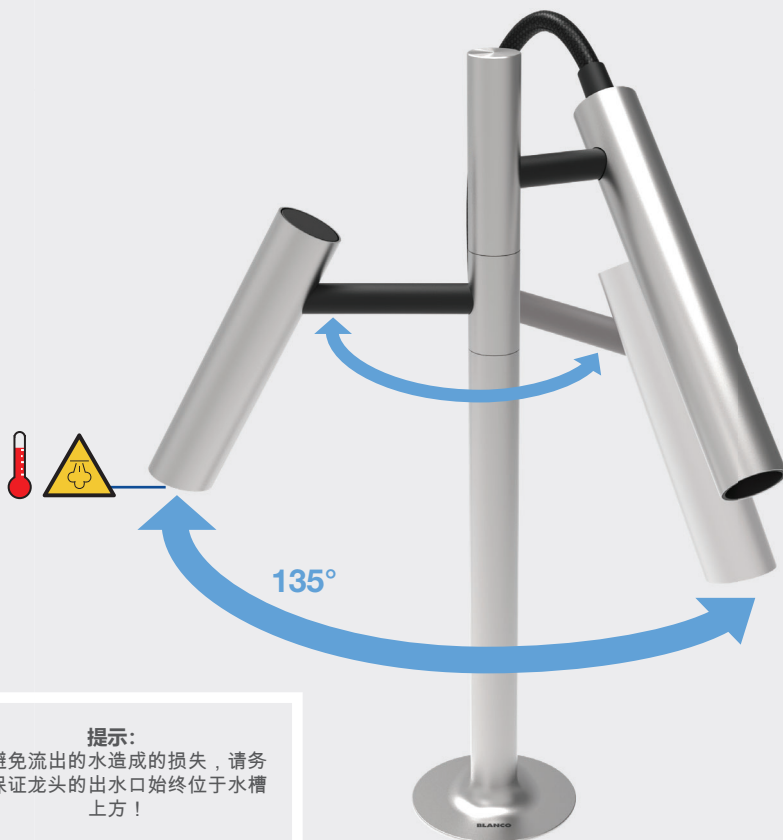
LED 指示灯闪烁红灯：供电异常

需要 6 节 AA 型/ LR6 电池



6. 左侧控制组件-饮用水

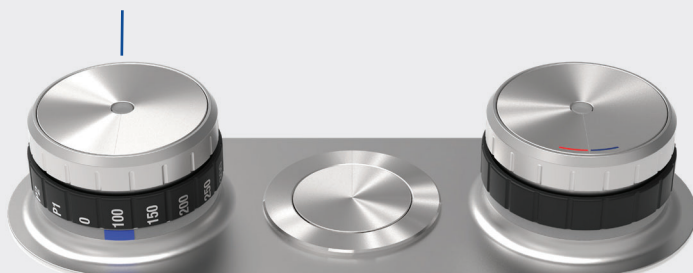
6.1 龙头的操作



提示:

为避免流出的水造成的损失，请务必保证龙头的出水口始终位于水槽上方！

左侧控制组件只能操控饮用水
(左侧出水口)



6.2 出水类型 (冷)

提示：根据所选底柜单元的不同，龙头可能无法提供所有类型（颜色）的水。

冷



旋转左侧控制组件的上半部分手轮选择冷水出水类型

蓝色



1秒



高气泡水

蓝绿色



1秒



中气泡水

绿色



1秒



无气泡冷水



触摸左侧控制组件的传感器可激活制水



只要再次触摸传感器即可停止制水

如果提前中断气泡水出水，系统会在最后用不含气泡的水进行短暂冲洗。

6.3 出水类型 (热)

提示：根据所选底柜设备的不同，龙头可能无法提供所有类型（颜色）的水。



小心

烫伤危险!

排出的热水可能很烫，或者热水会以细流或滴落的方式从龙头出水口流出。热水接触皮肤会造成烫伤！

► 不要接触热水，并保持距离。

热



+ 2次 (咔嚓声)

按住左侧控制组件并
旋转两次可选择热水



1秒



触摸传感器可
激活热水出水



按住转轮并转动2次（咔哒声）启动热水模式后10秒内可触摸侧面传感器激活热水出水，超过10秒无操作系统会自动切换回之前选择的出水类型（冷水）。

只要再次触摸即可停止出水。

CAUTION 灼伤危险!

热水出水口和其相邻的零件可能非常热。连续放出热水后，龙头的零件表面也会变得烫手，特别是龙头本体和出水管之间的部分。接触高温表面会导致灼伤！

- ▶ 不要接触高温表面。
- ▶ 切勿徒手接触高温表面。
- ▶ 当你需要旋转出口时，抓住最冷的部分：出水口的顶端。
- ▶ 让热的表面冷却。

6.4 水量选择轮的设置



选择水量



您可以使用底柜单元的校准功能优化出水量。请参阅底柜单元的操作说明书。

即使经过最佳优化，由于技术原因，出水量（尤其是热水）也会在一定范围内有所变动。



龙头已关闭



如果水量选择轮调到0，龙头将无法出水。但底柜单元依然可以进行加热和制冷处理。

您可使用此功能来对龙头进行清洁以防止意外的出水。

提示：

关闭左侧控制组件只能限制饮用水出水口！如果您希望暂停全部出水口那么您还需要将右侧控制组件调到清洁模式（长按手轮5秒以上）。



P1 至 P4

在 BLANCO UNIT App 中，您可以为转轮 P1 至 P4 的每个档位个性化的设置水量和出水类型。然后就可以通过传感器开始供水了。

如果在 BLANCO UNIT App 里设置的出水类型是“热水”，则必须在出水前解除安全设置（按住转轮并转动2次）。

更多关于 BLANCO UNIT App 的信息 → 请参阅第 43 页。



6.5 LED 环的显示



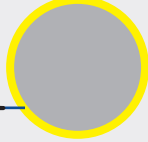
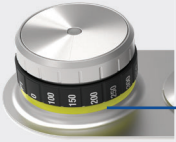
滤芯剩余寿命或二氧化碳剩余容量低于10%。这表示很快就需要更换二氧化碳气瓶，或清洗设备并更换滤芯（见底柜单元上的显示）。



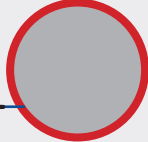
滤芯剩余寿命或二氧化碳剩余容量已用尽。这表示现在就需要更换二氧化碳气瓶，或清洗设备并更换滤芯（见底柜单元上的显示屏）。



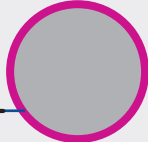
清洁程序正在运行。



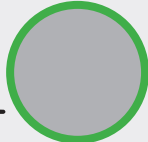
清洁程序正在运行，需要用户采取行动（见底柜单元上的显示屏）。



系统故障 / 错误 / 'Error'
（见底柜单元上的显示屏）。



系统处于菜单模式
（见底柜单元上的显示屏）。



正在初始化
（见底柜单元上的显示屏）。

7. BLANCO UNIT App

关于如何使用 BLANCO UNIT App 的提示

BLANCO UNIT App 允许您连接兼容的 BLANCO 产品，为您提供操作、维护和保养支持等附加功能。您可以通过 BLANCO UNIT App 直接联系 BLANCO 服务部门。

BLANCO UNIT App 可以让您更好地控制系统，并为您提供更多设置选项，例如：

- 定制化设置出水量和出水类型
- 在您的移动设备上查询耗材的购买信息
- 用来关闭热水功能的“热水阻断”功能
- 在您的移动设备上实时显示产品错误信息和提示
- 直接在移动设备上通过的图文辅助下执行设备清洁和滤芯更换操作
- 以及更多 ...!



该软件可在 iOS App Store 和 Android Store 里下载。



更多关于如何使用它的提示请查阅 BLANCO UNIT App 的说明。

Google Play 和 Google Play 徽标是 Google LLC 的商标；Apple 和 Apple 徽标是 Apple Inc 的商标。它们都已在美国和其它国家注册。

8. 清洁

可以用湿布擦拭控制盒和底座柜内的电池盒外侧，但不能擦拭插入的电源插头！确保无水进入系统，确保电源接线端子无受潮。

切勿使用含有研磨剂或氯的清洁剂来清洁表面。我们推荐您使用 BLANCO 建议的清洁剂来清洁龙头。您可在 BLANCO 网店订购这些清洁剂：



blanco.com/care-luneoo

为了避免在清洁过程中不必要的出水，龙头有清洁功能可使传感器暂停。

→ 见第35页（自来水）

→ 见第41页（饮用水）

9. 备件

您只需在 BLANCO 网店 blanco.com 里输入龙头型号代码，即可找到备件。龙头型号代码标注在龙头冷水软管上。

当然您也可以直接联系您的经销商或我们的客户服务部门，以寻求帮助或进一步的疑难解答。

→ BLANCO客户服务的联系方式见本说明书末页。



blanco.com/shop-luneoo

10. 废弃处置/环境保护

10.1 停止使用

设备的停用方法在安装说明中做了介绍。
→ 见说明书1的第5章“停止使用”。

此类工作一定要交由专业人员来完成！



10.2 龙头的废弃处理

法定义务要求您避免浪费、保护您自身的健康并且保护环境：

- ▶ 将产品送到收集点。切勿将产品作为一般生活垃圾处理。



11. 合规性

本系统符合相关指令的要求。

您可以向 BLANCO 索要合规声明。



blanco.com/contact-luneoo

BLANCO AUSTRALIA PTY LTD
Service AU
Phone: +61 75 5960 894
blanco@t2services.com.au

铂浪高贸易(上海)有限公司
中国服务商
电话: +86 400-788-2100
info-blancochina@blanco.de

