

## BLANCOSELECT E/L

### Bedienungs- und Einstellanleitung

Bitte an den Endverbraucher weitergeben!

### Operating and alignment manual

Please hand to the customer!

### Instructions de manieient et d'ajustage

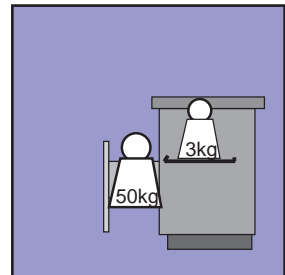
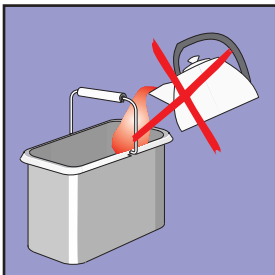
À remettre s.v.p. au client!

### Instucciones de manejo e ajuste

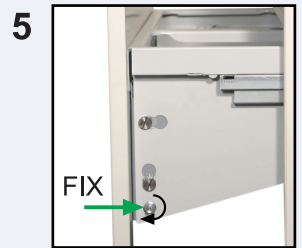
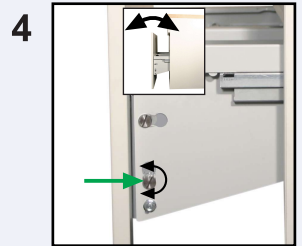
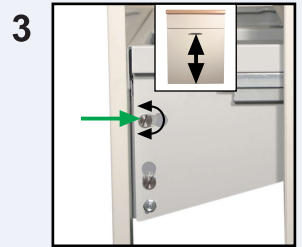
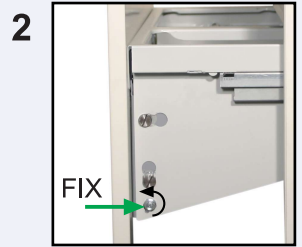
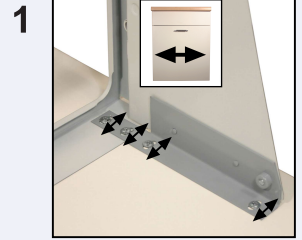
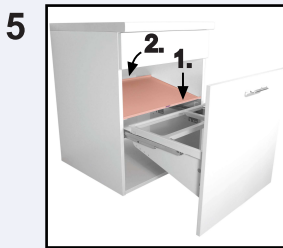
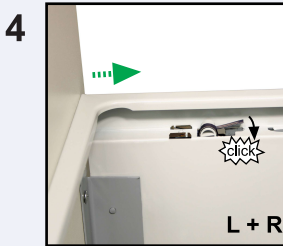
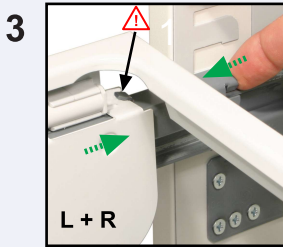
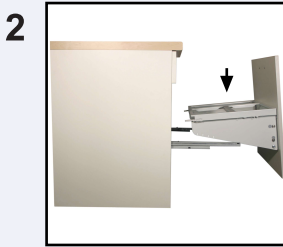
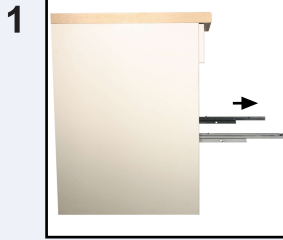
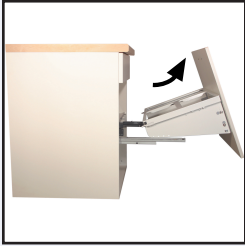
Por favor entréguese al usuario!

### Istruzioni per il corretto utilizzo e il allineamento

Dokumentatione da inoltrare alla clientela!



# BLANCOSELECT E/L



# BLANCO

BLANCO GmbH + Co KG

Abteilung Technischer Kundendienst

Flehinger Str. 59

75038 Oberderdingen

GERMANY

Tel: +49 7045 44-419

Fax: +49 7045 44-574