

BLANCO LUNEOO-S

Assembly instructions • 组装说明

blanco.com



eng	ASSEMBLY INSTRUCTIONS	4
zhx	组装说明	20

Contents



1. Safety	4
1.1 General information	4
1.2 Intended use	5
1.3 Restrictions on the user group	5
1.4 Safe installation	5
1.5 Safe use	6
1.6 Plumbing Code of Australia (PCA)	6
2. Avoiding property damage	7
3. Environmental protection	7
4. Assembling and connecting	7
4.1 Scope of delivery	7
4.2 Criteria for the installation location	7
4.3 Fitting the mixer tap	8
4.4 Preparing the mixer tap for first use	17
5. Shutting down	18
6. Disposing of the mixer tap	18
7. Customer service	18



1. Safety

Please observe the following instructions.

1.1 General information

These assembly instructions are part 1 of a total of 2 manuals. You will find the manual number on the cover page of the document.



- ▶ Please read these instructions and the other instructions carefully before assembling and using the product to ensure correct assembly and safe use of the product.
- ▶ Ensure that you follow the instructions and the work steps in the specified order.
- ▶ Observe the safety instructions and the installation requirements.
- ▶ Pay attention to the indicator elements on the components: the LED ring on the mixer tap control unit.
- ▶ Keep the manuals and product information in a safe place ready to use at a later date or pass on to the subsequent owner.
- ▶ Do not connect the mixer tap if it has been damaged during transport.

1.2 Intended use

The mixer tap is designed for use in Australia/New Zealand and China, including Hong Kong. Use in other countries is at your own risk. You must check the legal and structural requirements in the place of use.

The system was designed for private use, usually within a kitchen space.

Any operation beyond the intended usage or any other use is considered misuse. BLANCO accepts no liability for any damage caused by misuse.

1.3 Restrictions on the user group

Children aged 8 or over and people with reduced physical, sensory or mental capabilities or lacking in experience and knowledge may only use the mixer tap under supervision or if they undergo a suitable briefing on safe usage and they are aware of the associated risks and hazards. Children must not play with the mixer tap. Children must not carry out cleaning and user maintenance without supervision.

1.4 Safe installation



WARNING Danger posed by magnetic field!

The spray head holder and the spray head itself contain a strong magnet. This magnetic field can prevent a pacemaker from functioning properly!

► Individuals with a pacemaker should keep a distance of at least 25 cm.

NOTICE!

Maintain cleanliness! Careless handling can cause problems with water hygiene.

- ▶ Keep water-conducting parts such as seals, threads and hose connections clean. Only touch after cleaning your hands thoroughly.
- ▶ Do not touch any surfaces that come into contact with drinking water after installation.

1.5 Safe use**⚠ WARNING Risk of suffocation!**

Children can pull packaging material over their heads or wrap themselves in it and suffocate!

- ▶ Keep packaging material away from children.
- ▶ Do not allow children to play with packaging material.

Children can inhale or swallow small parts and choke as a result!

- ▶ Keep small parts away from children.
- ▶ Do not allow children to play with packaging material.

1.6 Plumbing Code of Australia (PCA)

This installation is subject to the requirements of the applicable regulatory authority, the National Construction Code Volume Three - Plumbing Code of Australia, associated reference standards as applicable at the time and AS 3718.

2. Avoiding property damage

Damage, incorrect installation and improper repairs can cause leaks and considerable property damage.

- ▶ Only trained specialists may install and connect the mixer tap. BLANCO assumes no liability for improper or non-professional installation.
- ▶ Cables and hoses must be routed in such a way that they cannot be damaged. If you use a waste system, you must pay special attention and ensure that cables and hoses cannot become caught or damaged.
- ▶ Never put a damaged mixer tap into operation.
- ▶ Only trained specialists may repair the mixer tap.
- ▶ Have damaged parts replaced by a professional.
- ▶ Only original spare parts may be used to repair the mixer tap.

3. Environmental protection

The packaging materials are environmentally friendly and recyclable.

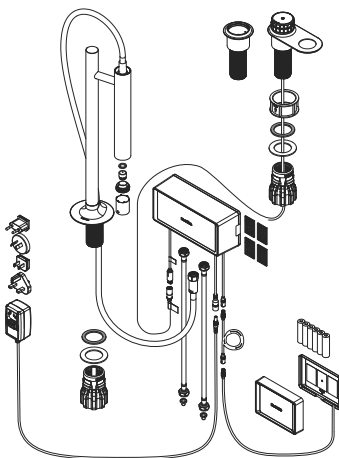
- ▶ Sort and dispose of each individual part by material type.



4. Assembling and connecting

4.1 Scope of delivery

After unpacking the delivery, check all parts for transport damage and ensure they are complete. The delivery consists of the parts shown here and two manuals. If you have any complaints, please contact your dealer or our customer service
→ see rear page.



4.2 Criteria for the installation location

Water connection requirements

- Constant drinking water quality
- Constant flow pressure

Hot water corner valve

- Maximum temperature 70 °C (158 °F)
- Maximum pressure 10 bar (145 psi)

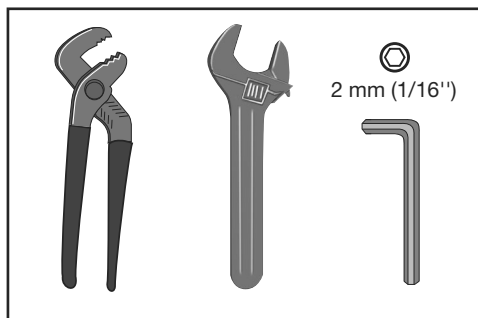
Cold water corner valve

- Temperature 5 - 30 °C (40 - 86 °F)
- Pressure 1 - 10 bar (14.5 - 145 psi)

Tap hole requirements

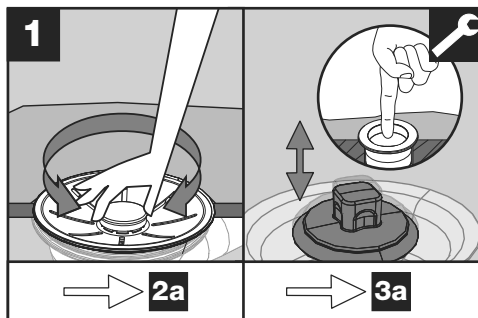
The sink or worktop must have a tap hole 35 mm (1 3/8") in diameter; thickness of the worktop: 10 - 50 mm (3/8" - 1 15/16").

4.3 Fitting the mixer tap



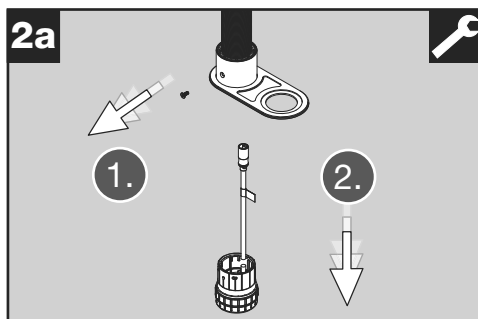
Required tools:

- Pliers
- Adjustable wrench
- Hexagon socket spanner (hex key), 2 mm (1/16'')



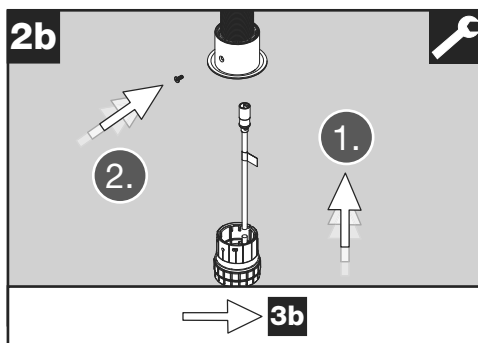
Check whether the kitchen sink drain works with or without the drain remote control.

- Without drain remote control:
Continue with step 2a
- With BLANCO PushControl drain remote control: Continue with step 3a



Only for sinks without drain remote control:

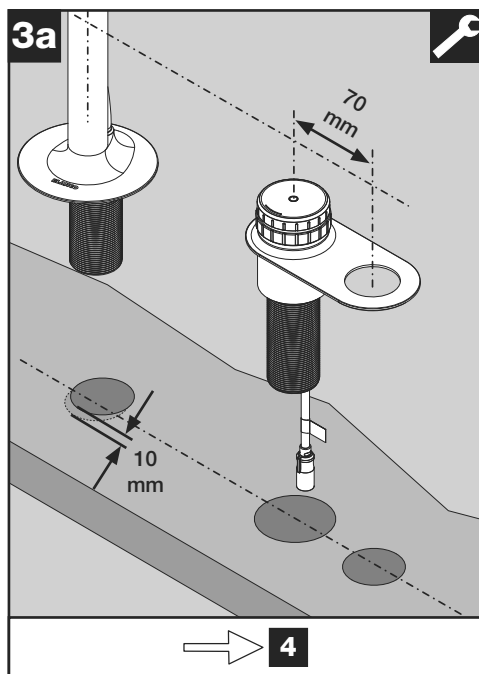
Unscrew the small locking screw on the holder using a hexagon socket spanner (2 mm - 1/16'' hex key). Remove the operating element.



Only for sinks without drain remote control:

Install the operating element into the holder without a hole and fasten it into place with the locking screw.

Continue with step 3b.



With BLANCO PushControl drain remote control:

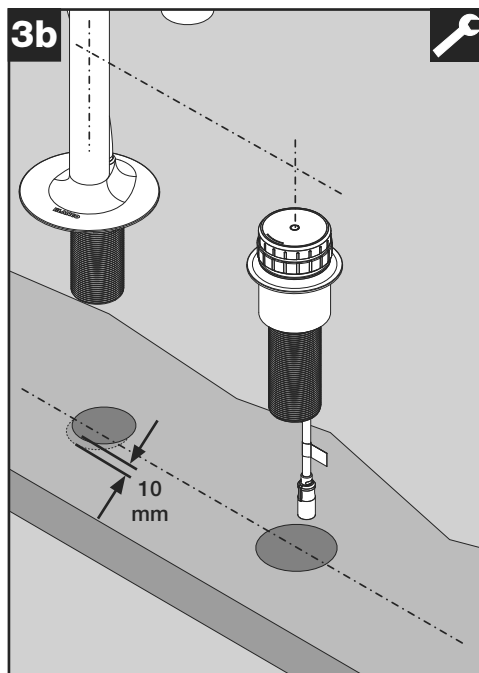
A total of three holes are required: Two holes 35 mm (1 3/8") in diameter (the tap hole for the mixer tap and the hole for the BLANCO PushControl drain remote control) and one hole 50 mm (1 15/16") in diameter for the operating element. The two holes in the operating element are 70 mm (2 3/4") apart.

NOTICE!

The mixer tap's threaded pipe is set back 10 mm (3/8") in relation to the mixer tap's body!

If the operating element and the mixer tap body are fitted in a row, the hole for the mixer tap must be set back 10 mm (3/8").

Continue with step 4.



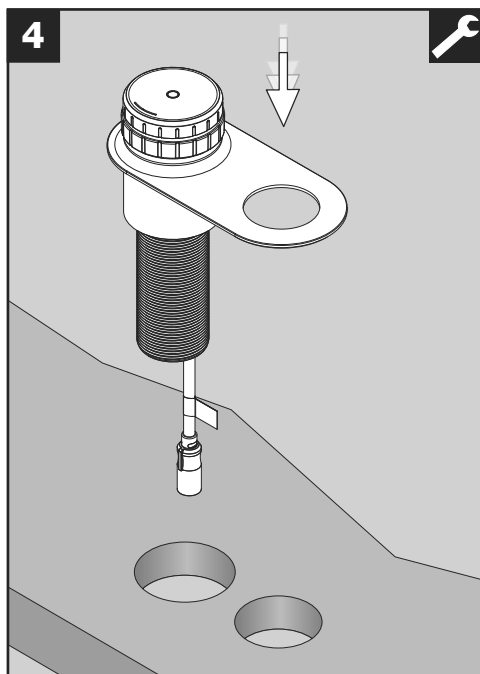
Only for sinks without drain remote control:

A total of two holes are required: The tap hole for the mixer tap, 35 mm (1 3/8") in diameter, and one hole for the operating element, 50 mm (1 15/16") in diameter.

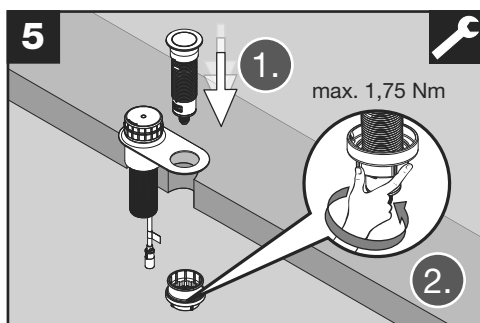
NOTICE!

The mixer tap's threaded pipe is set back 10 mm (3/8") in relation to the mixer tap's body!

If the operating element and the mixer tap body are fitted in a row, the hole for the mixer tap must be set back 10 mm (3/8").

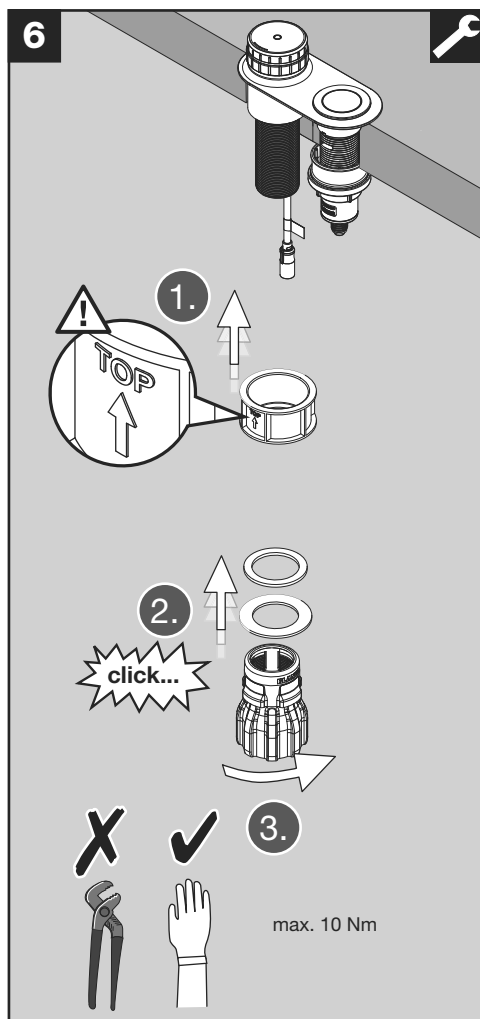


Insert the holder with the operating element into the hole(s).



With BLANCO PushControl drain remote control:

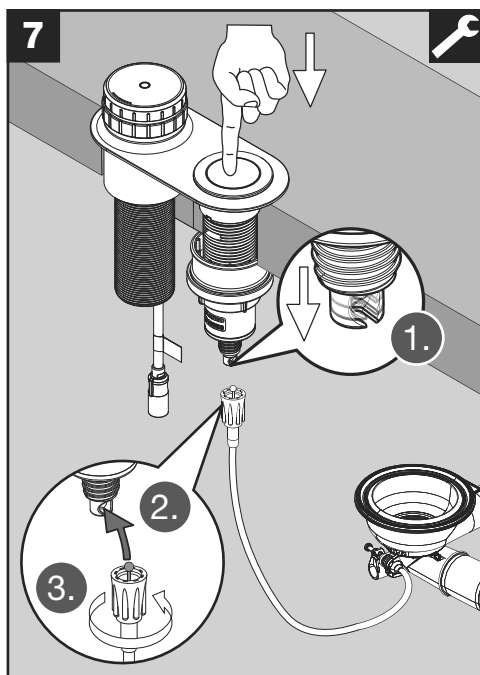
Fit the PushControl element (included in the scope of delivery with the sink drain set) into the operating element and screw into place.



Fasten the operating element with the spacer sleeve and the assembly kit.

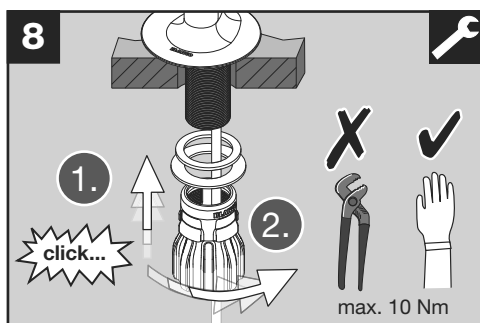
Ensure the spacer sleeve is installed in the correct position!

First push the mounting nut upwards and then tighten it by hand.



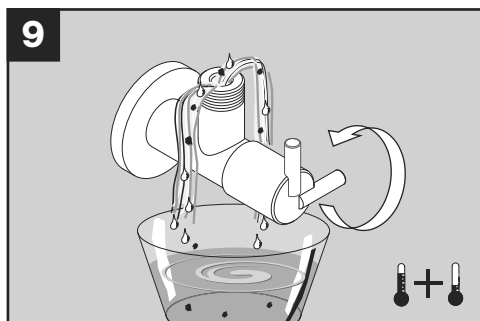
With BLANCO PushControl drain remote control:

Connect the drain set Bowden cable to the PushControl drain remote control.

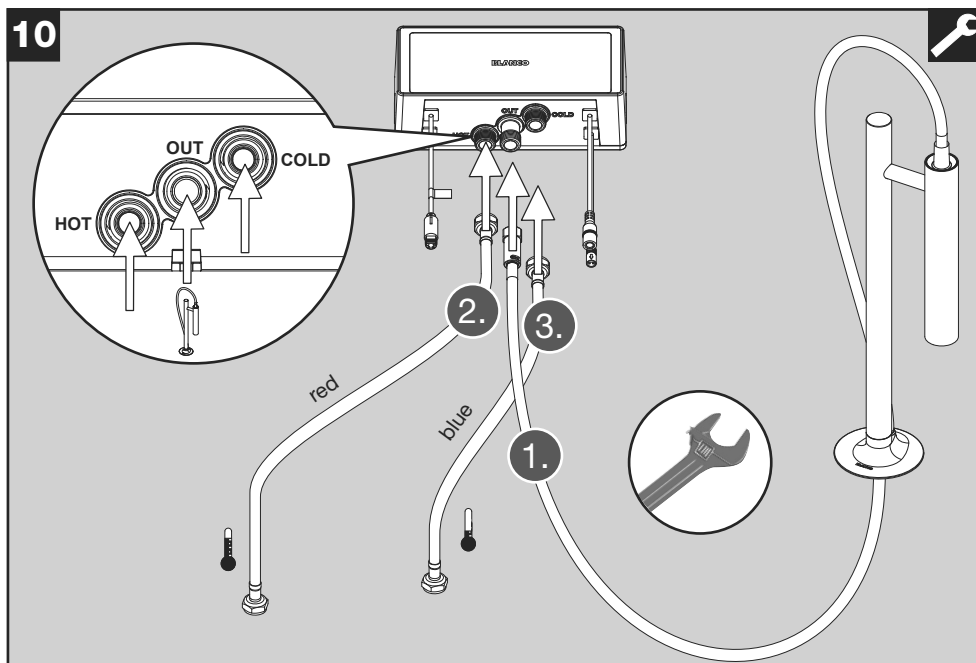


Fasten the mixer tap with the assembly set.

First push the mounting nut upwards and then tighten it by hand.



Purge both corner valves until clean water comes out.

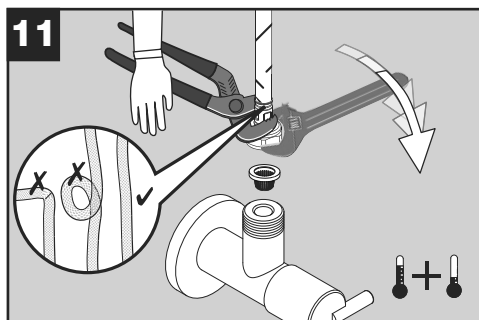


Fit three hoses to the control box:

NOTICE!

Do NOT kink or twist the spray hose! The spray hose is adjustable in length but cannot be pulled out.

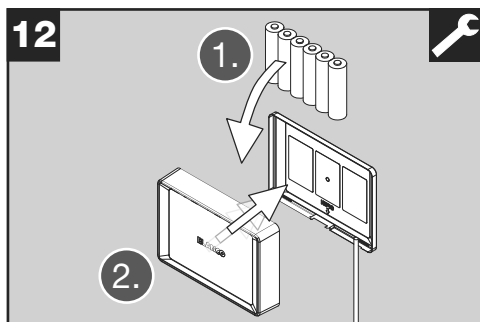
1. **CENTRE (OUT):** Mixer tap spray hose
2. **LEFT (HOT):** red flexible hose for hot tap water
3. **RIGHT (COLD):** blue flexible hose for cold tap water



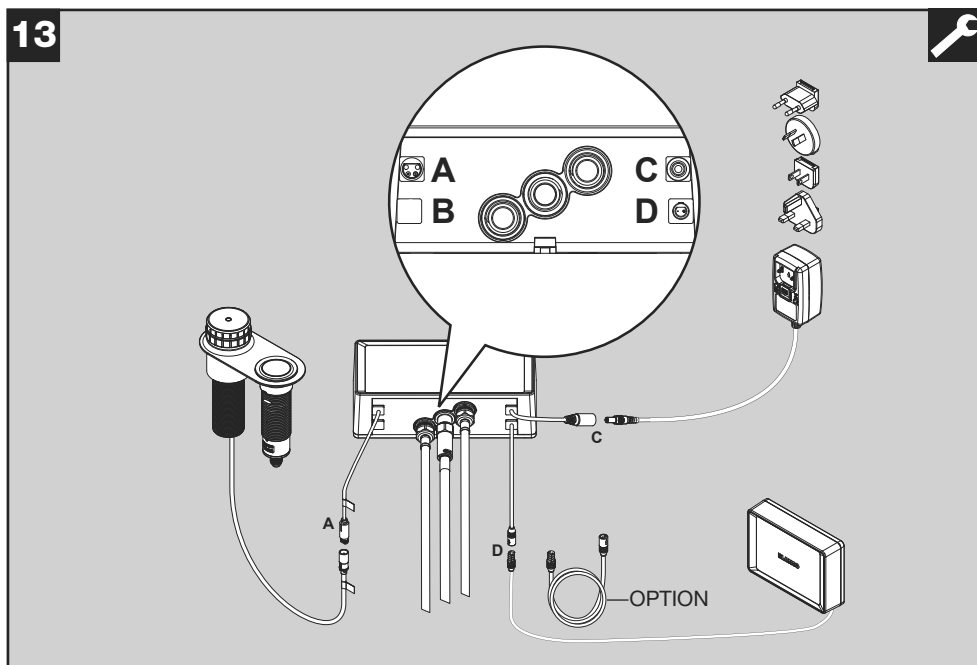
NOTICE!

Hoses must not be twisted or kinked!

- ▶ Install the hoses so that they are straight and secure them against twisting when tightening the nut. Ensure that a sieve seal is inserted.
- Attach the red flexible hose from the mixer tap to the hot water corner valve (left).
- Attach the blue flexible hose to the cold water corner valve (right).



Insert six AA/LR6 batteries (included in delivery) into the battery box and close it.



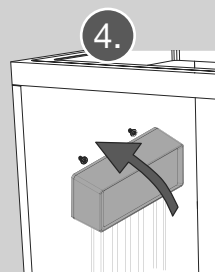
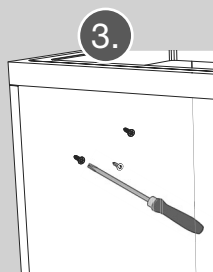
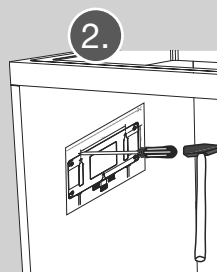
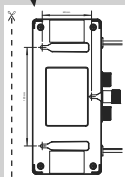
Fitting the cables to the control box:

1. Plug the cable from the operating element with the yellow tag into connection A. Cable A also features a yellow tag.
2. Connect the power supply unit to cable C.
3. Connect the battery box to cable D. You can use the optional extension cable if you wish.

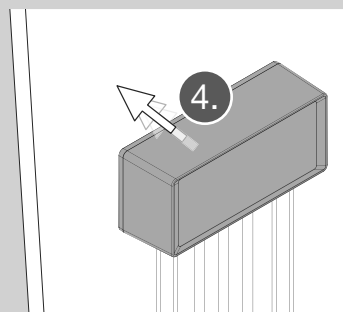
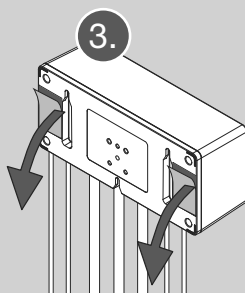
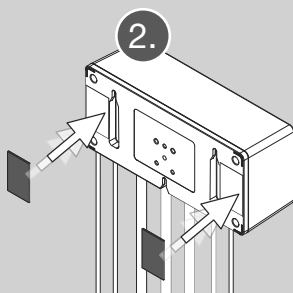
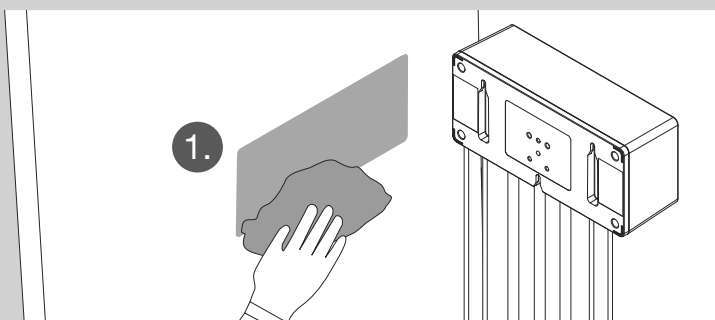
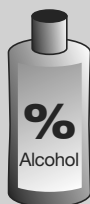
NOTICE!

For correct functionality the AC adapter (C) AND the battery box (D) are needed!

14 Option A



Option B

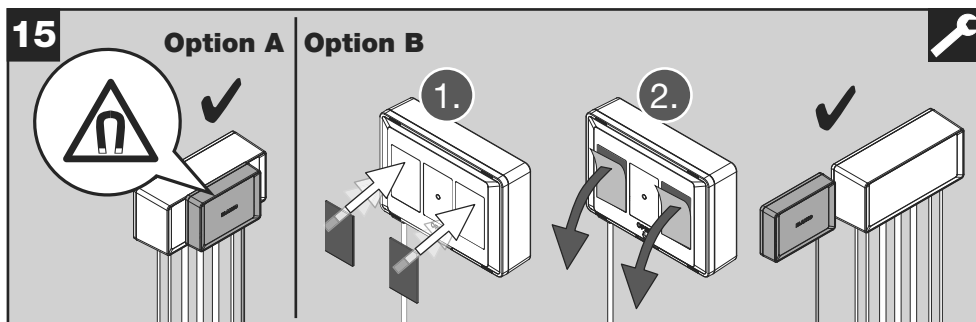


Installing the control box:

The delivery includes two Velcro adhesive strips. These can optionally be used in either step 14 or step 15 (option B in each case).

Option A (screw fastening): Use the second last page of this user manual as a template and mark the holes. Fasten three screws into the base cabinet (take into account the thickness of the cabinet side wall). Attach the control box to the screws.

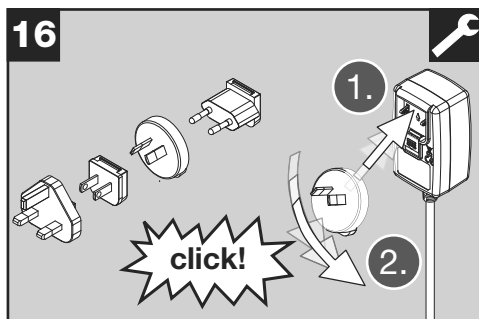
Option B (adhesive attachment): Attach the control box with the enclosed Velcro strips: Clean the surfaces where the adhesive strips will be attached (e.g. with alcohol). The surfaces must be free of dust and grease to ensure a good adhesive bond. Attach the Velcro adhesive strips to the control box rear. Removed protective film. Affix the control box to the chosen location (on the cleaned surface).



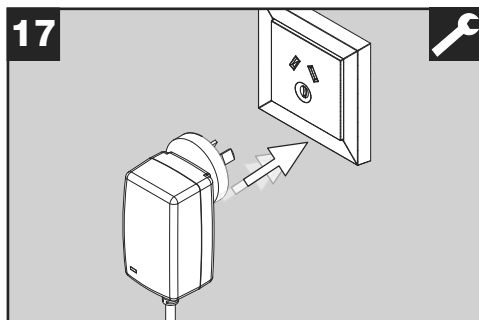
Installing the battery box:

Option A (attachment with magnet): Place the battery box on the front of the control box. The battery box automatically attaches itself to the control box thanks to the integrated magnets.

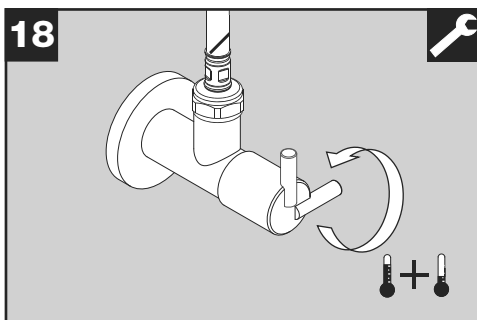
Option B (adhesive attachment): Attach the battery box with the enclosed Velcro strips: Clean the surfaces where the adhesive strips will be attached (e.g. with alcohol). The surfaces must be free of dust and grease to ensure a good adhesive bond. Attach the Velcro adhesive strips to the battery box rear. Removed protective film. Affix the battery box to the chosen location (on the cleaned surface).



Plug the right adapter into the mains adapter and snap it into place.



Connect the plug-in mains adapter into the socket outlet.

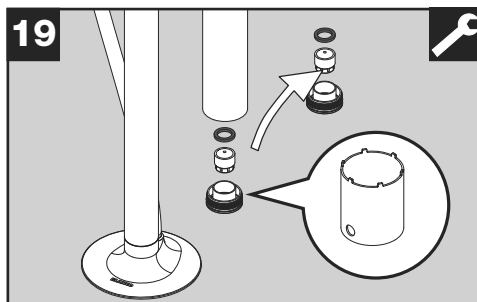


Fully open both corner valves.

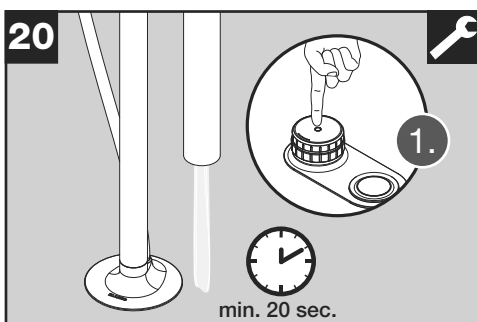
NOTICE!

Check all connections for leaks!

4.4 Preparing the mixer tap for first use

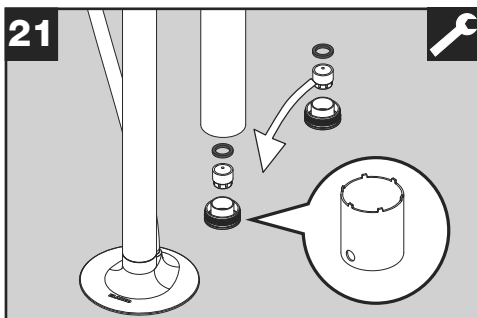


Remove the flow regulator from the spray head (spanner is supplied with the mixer tap).



Purge mixer tap and hoses thoroughly with water (hot and cold water; at least 20 seconds).

The description of how to select and activate the water types on the mixer tap can be found in the mixer tap's operating instructions (instruction number 2).



Stop the water flow and reinstall the flow regulator.



Please hand over the following to the system owner:

- the assembly and operating instructions (usually two documents)
- the flow regulator key(s) for the mixer tap.

Explain to the user how the mixer tap works. Familiarise the user with the use and go through the operating instructions (manual 2) with them.

5. Shutting down

- ▶ Close both corner valves.
- ▶ Detach all cables from the control box.

NOTICE!

When disconnecting water-conveying hoses, small amounts of water may leak out!

- ▶ Unscrew hoses to the control box and to the corner valves.
- ▶ Undo installation nuts and remove mixer tap / control unit.

6. Disposing of the mixer tap

You are legally obliged to avoid generating waste and protect your health and the environment:

- ▶ Return the product to a collection point. Do NOT dispose of the product in general household waste.



7. Customer service

If you have any questions or complaints, please contact your dealer or our customer service → see rear.

For more information and spare parts, please visit the BLANCO online shop:
blanco.com/shop-luneoo



目录



1. 安全	20-22
1.1 常规提示	20
1.2 产品使用范围	21
1.3 用户群体限制	21
1.4 安装注意事项	21
1.5 使用注意事项	22
2. 避免财产损失	22
3. 环境保护	22
4. 安装和连接	23-34
4.1 供货范围	23
4.2 安装地点相关要求	23
4.3 龙头的安装	24-33
4.4 龙头的首次使用	33-34
5. 停止使用	34
6. 龙头的废弃处理	34
7. 客户服务	34



1. 安全

请遵守下列安全提示。

1.1 常规提示

这份安装说明书是总共2份说明书中的第1部分。文档的扉页上注有说明书的编号。

- ▶ 为确保正确安装和安全使用产品，请在安装和使用产品前仔细阅读本说明书和其他说明。
- ▶ 请确保遵循说明书的顺序和操作步骤顺序。
- ▶ 请遵守安全提示和安装规定。
- ▶ 注意组件的显示元件：龙头把手组件上的LED指示灯。
- ▶ 保存好说明书和产品信息，以备日后使用或下一位所有者参考。
- ▶ 如果在运输过程中出现损坏，请勿连接龙头。



1.2 产品使用范围

本龙头适合在私人家庭环境里使用。它专为在澳大利亚和中国 (包括香港) 使用而设计。

使用本龙头的前提条件是 : 在家庭环境的封闭房间里使用 , 通常是厨房。

任何违背或超出指定用途范围的使用方式均被视作滥用。对于因滥用而造成的损坏/损失 , BLANCO 不承担任何责任。

1.3 用户群体限制

8岁或以上的儿童以及身体、感官或精神能力下降或缺乏经验和知识的人只能在监督下使用本龙头 , 或者如果他们接受了关于安全使用龙头的适当指导 , 并且理解了相关的风险和危害后 , 则也可以自行使用本龙头。不允许将龙头当作儿童的玩具。儿童不得在没有监督的情况下对本龙头进行清洁或维护。

1.4 安装注意事项



警告

磁场造成的危险 !

花洒头支架含有强磁铁。这种磁场会影响心脏起搏器的功能 !

► 装有心脏起搏器的人员应保持至少25厘米的距离。

注意!

注意清洁 ! 处理不慎可能导致水被污染 !

- 保持过水部件 (密封件、软管接口、螺纹) 清洁。只能用彻底清洁的手触摸这些零件。
- 安装后 , 不要接触任何与饮用水接触的表面。

1.5 使用注意事项



警告

窒息危险!

儿童可能会把包装材料套在头上或裹住头部, 从而引起窒息!

- ▶ 将包装材料放在远离儿童的地方。
- ▶ 不要让儿童把包装材料当作玩具。

儿童可能会吸入或吞咽小零件并因此窒息!

- ▶ 将小零件放在远离儿童的地方。
- ▶ 不要让儿童把小零件当作玩具。

2. 避免财产损失

损坏、不正确的安装和维修方式都可能导致泄漏和严重的财产损失。

- ▶ 只有经过培训的专业人员才能安装和连接龙头。对于因安装方式不当或不专业而造成的损失, BLANCO 不承担责任。
- ▶ 在敷设电缆和软管时, 必须确保不会出现损坏。若有使用垃圾处理系统, 尤其要注意不能卡住或损坏电线和软管。
- ▶ 切勿使用已损坏的龙头。
- ▶ 只有经过培训的专业人员才能对龙头进行维修。
- ▶ 请专业人员更换损坏的部件。
- ▶ 修理龙头时, 只能使用原装备件。

3. 环境保护

产品的包装材料均为环保材料且可回收。

- ▶ 请分门别类地分离并丢弃各个部件。

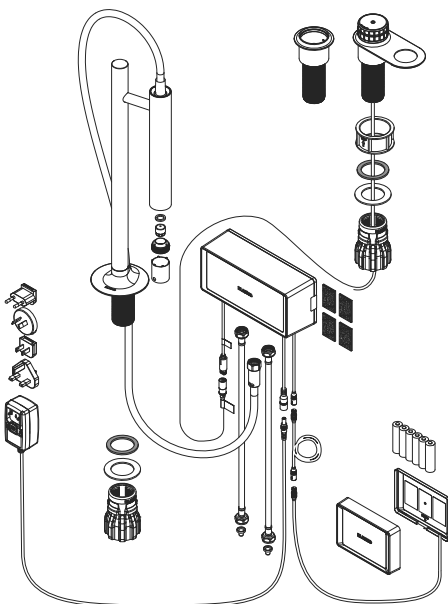


4. 安装和连接

4.1 供货范围

打开包装后,请检查所有部件是否存在运输损坏,是否完整。交货内容包括图中所示的部件和两份说明书。

如果您有不满意,请联系您的经销商或我们的客户服务部门 → 见末页。



4.2 安装地点相关要求

接水要求

- 稳定的饮用水质量
- 水压恒定

热水角阀

- 最高温度 70 °C (158 °F)
- 最大压力 10 bar (145 psi)

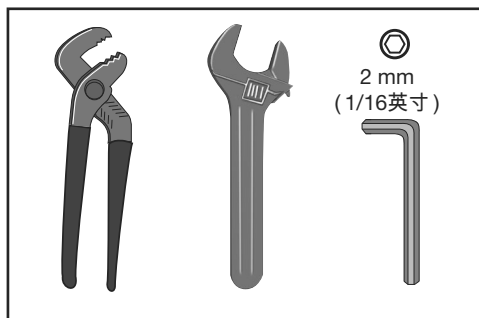
冷水角阀

- 温度 5 - 30 °C (40 - 86 °F)
- 压力 1 - 10 bar (14.5 - 145 psi)

对龙头开孔的要求

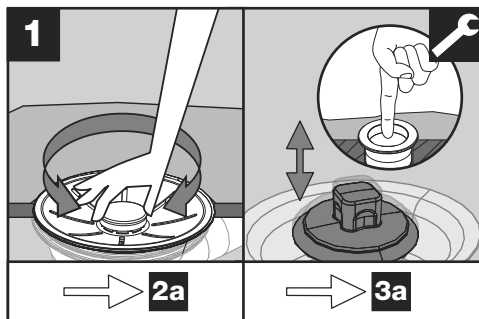
水槽或台面必须有直径为35毫米(1又3/8英寸)的龙头开孔。台面的最大厚度:50毫米(1又15/16英寸)。

4.3 安装龙头



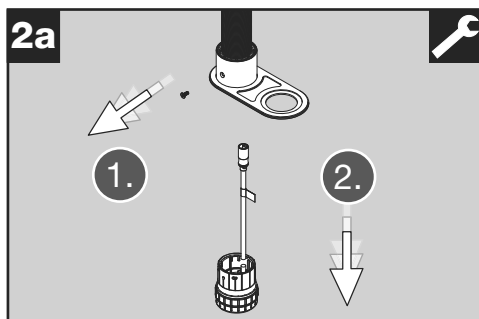
所需的工具:

- 管钳
- 活动扳手
- 2 mm (1/16英寸) 内六角扳手



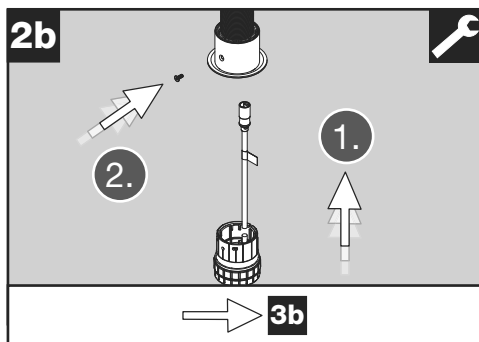
请检查水槽下水组件是否带台控。

- 不带台控: 跳转至步骤2a
- 带台控: 跳转至步骤3a



仅适合不带台控的安装:

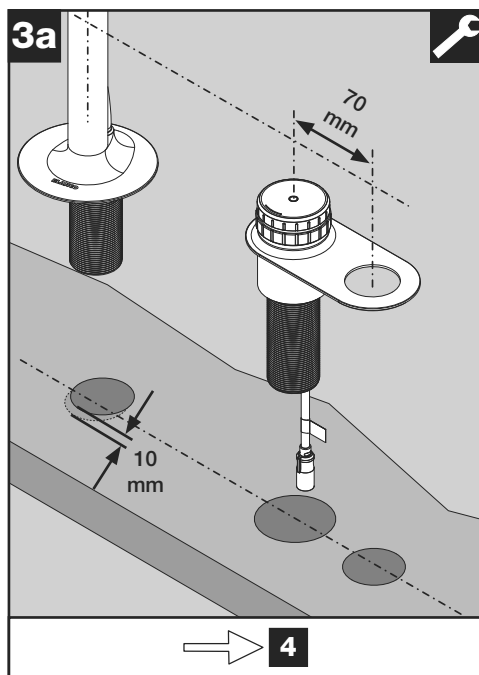
用2mm内六角扳手拧松把手组件上的螺钉。取出控制单元。



仅适合不带台控的安装:

将操作单元安装入把手组件(不带圆孔板)并锁紧螺钉。

继续步骤3b。



仅适合带按压式台控的安装:

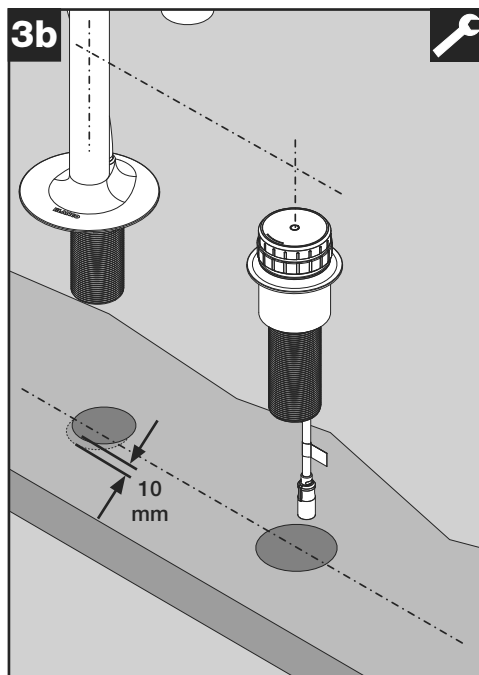
一共3个开孔: 其中两个开孔35mm (1又3/8英寸) 大小是龙头及台控安装孔, 其另一个开孔50mm (1又5/16英寸) 大小是把手组件安装孔。把手组件安装孔与台控安装孔间距是70mm (2又3/4英寸)。

注意!

龙头主体的安装螺杆相对龙头本体往后10mm (3/8英寸) !

因此, 若希望把手组件和龙头主体安装在一条线上则必须将龙头主体安装开孔往后10mm (3/8英寸)。

继续步骤4。



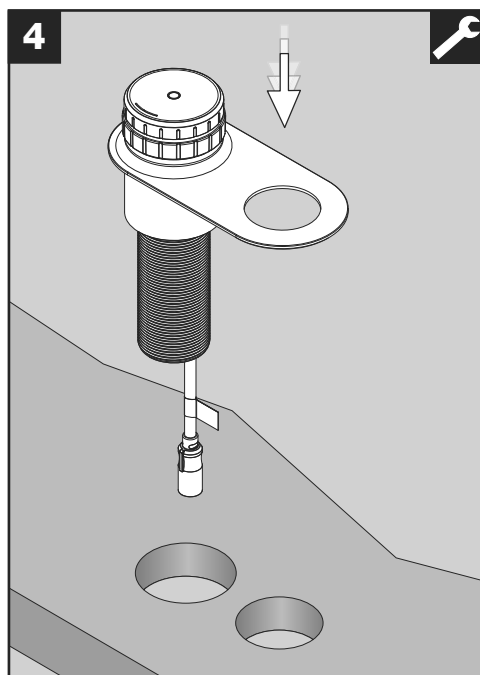
仅适用不带台控的安装:

一共2个开孔: 其中1个开孔35mm (1又3/8英寸) 大小是龙头安装孔, 其另一个开孔50mm (1又5/16英寸) 大小是把手组件安装孔。

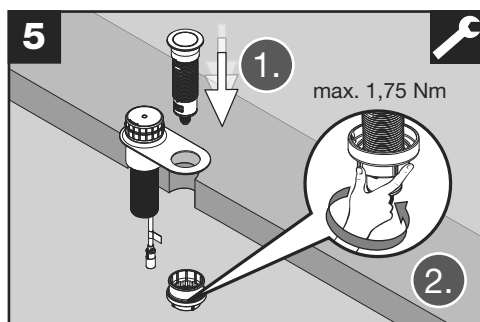
注意!

龙头主体的安装螺杆相对龙头本体往后10mm (3/8英寸) !

因此, 若希望把手组件和龙头主体安装在一条线上则必须将龙头主体安装开孔往后10mm (3/8英寸)。

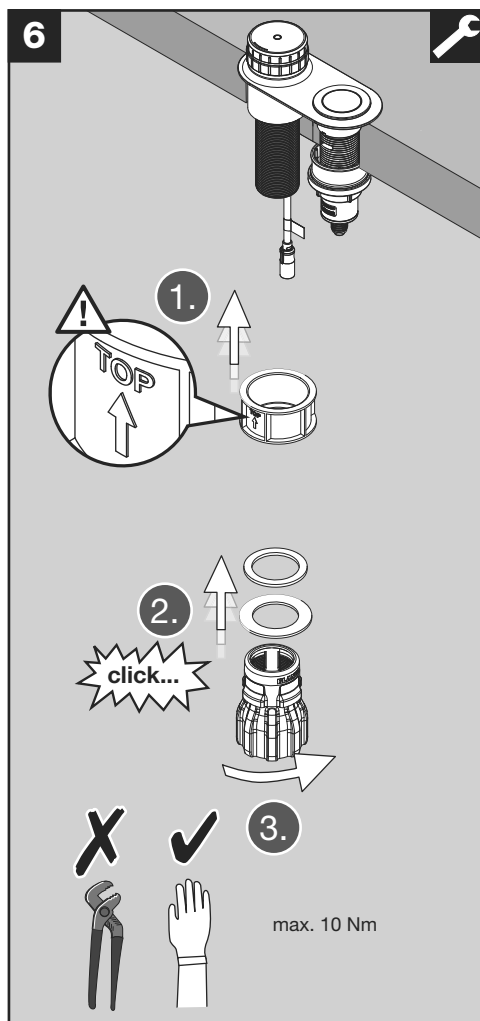


装入把手组件。



适用于按压式台控的安装：

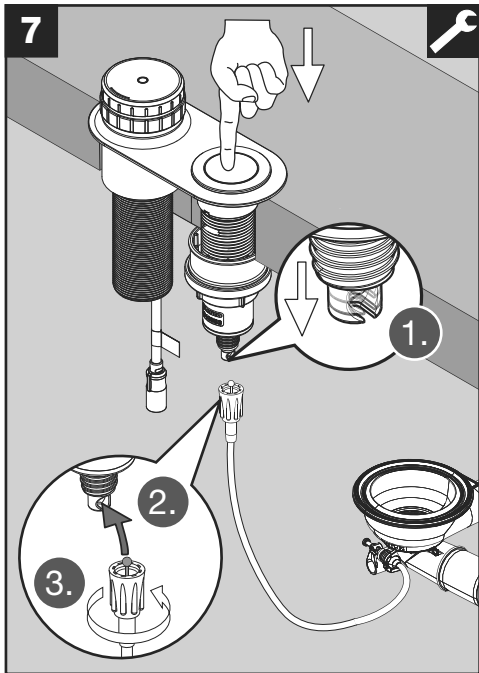
将台控组件（包括自带的台下组件）插入把手组件中并锁紧台控。



用环形垫圈和安装组件锁紧把手组件。

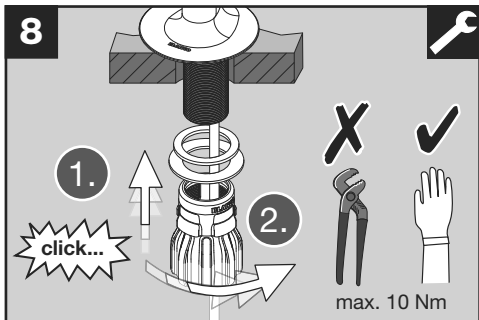
确保环形垫圈安装在正确位置上。

首先将装配螺母向上推，然后用手拧紧。



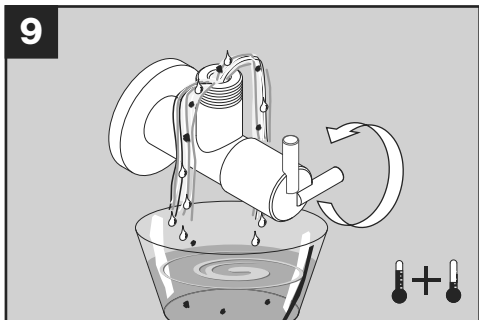
适用于按压式台控安装:

将台控连接线安装到按压式台控上。

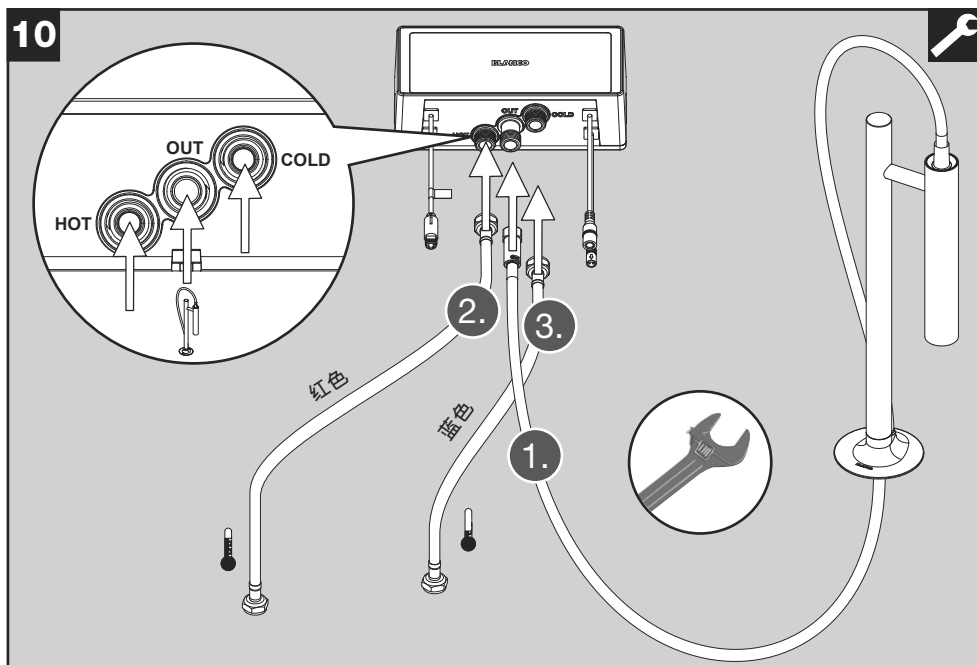


使用安装套件安装水龙头。

首先将装配螺母向上推，然后用手拧紧。



冲洗两个角阀，直到流出的是干净的水。

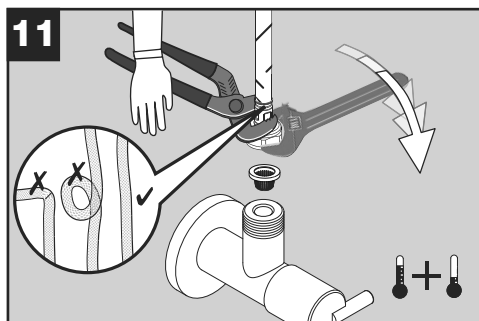


将三个软管连接到控制盒上:

注意!

不可将抽拉软管弯折或扭结! 抽拉软管可以调节但不可伸缩。

1. 中间: 龙头抽拉软管
2. 左边 (热): 红色热水软管
3. 右边 (冷): 蓝色冷水软管

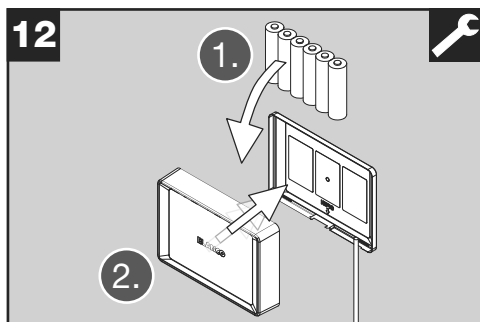


注意!

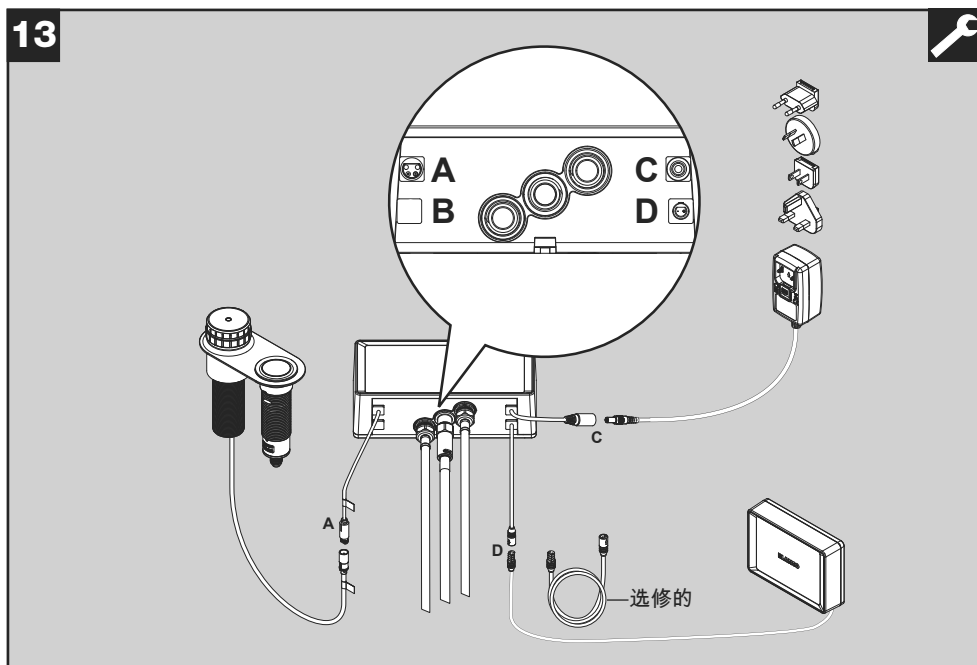
软管不可以被弯折或扭结!

► 安装龙头进水软管, 使其平直, 并在拧紧螺母时防止其被弯折或扭结。确保已插入一个筛网密封垫。

- 将红色进水软管安装到热水角阀 (左侧) 上。
- 将蓝色进水软管安装到冷水角阀上 (右侧)。



将6节5号干电池装入电池盒中并盖紧它(龙头包含电池)。



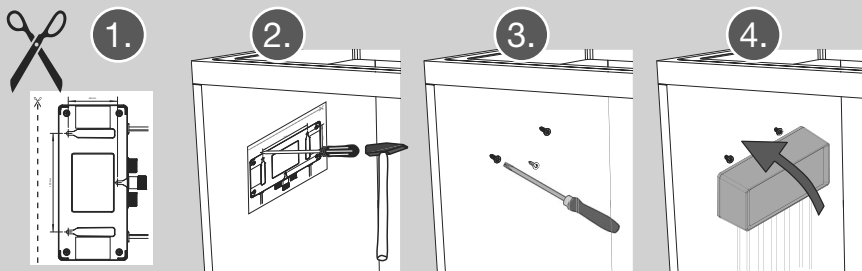
将信号线缆接入控制盒:

1. 将操作组件中带黄色标签的线缆插入A接头, A接头同样带有黄色标签。
2. 将电源适配器插入接头C。
3. 将电池盒插入接头D, 视情况选择是否接入线缆延长线。

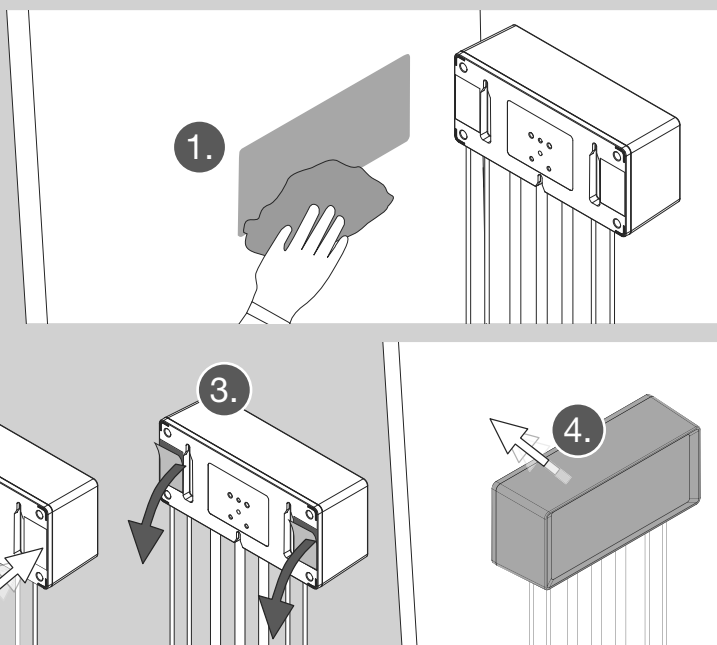
注意!

电源适配器和电池盒必须同时连接才能保证正常工作!

14 选项A



选项B

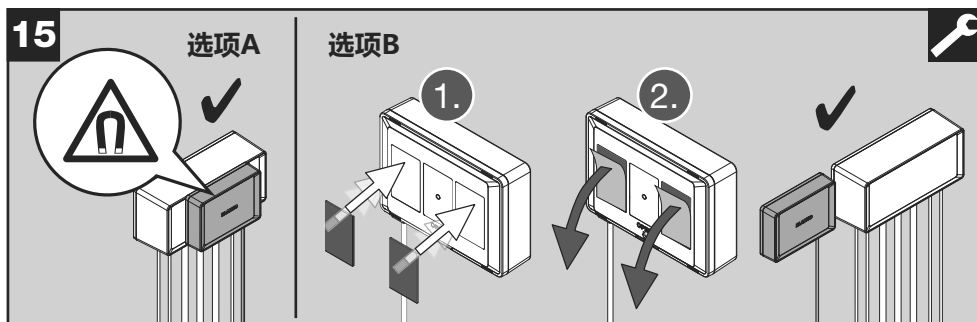


安装控制盒:

交付时包含两条魔术贴。它们可用于步骤 14 或步骤 15 (每种情况均使用于选项 B)。

选项A (螺钉安装): 使用本手册倒数第二页作为模板定位并标记出孔。将3颗螺钉固定在柜体上 (考虑侧壁的厚度)。将控制盒固定在螺钉上。

选项B (魔术贴安装): 用随附的魔术贴粘贴控制盒: 清洁粘贴魔术贴的表面。粘贴表面必须除去灰尘和油脂才能确保粘贴牢固。将魔术贴粘贴在控制箱后方并去除保护膜。将控制盒粘贴到选定位置 (清洁后的表面)。



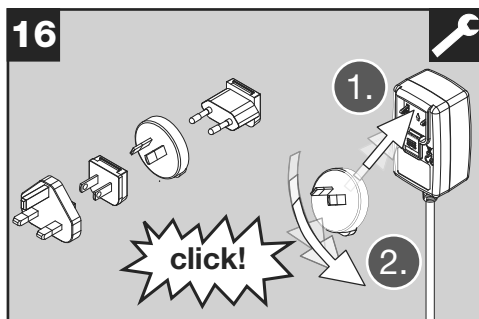
安装电池盒：

选项A (磁吸安装)：

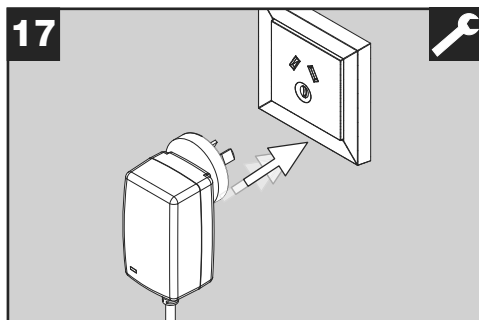
将电池盒放置在控制盒正面，电池盒会自动吸附在控制盒上。

选项B (魔术贴安装)：

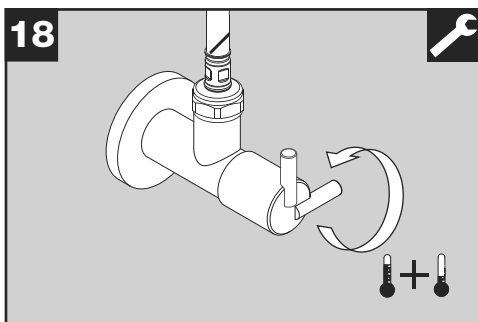
用随附的魔术贴粘贴电池盒：清洁粘贴魔术贴的表面。粘贴表面必须除去灰尘和油脂才能确保粘贴牢固。将魔术贴贴到电池盒背面，然后撕掉保护膜。将电池盒粘贴到选定位置（清洁后的表面）。



将正确的插头装入电源适配器中
(需听见咔哒声)。



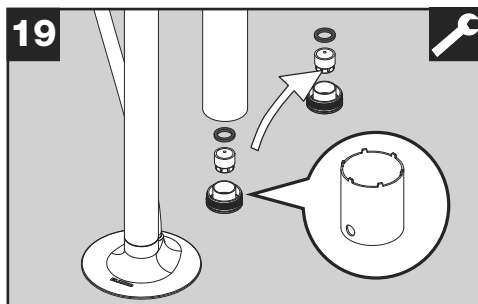
将电源适配器插入插座。



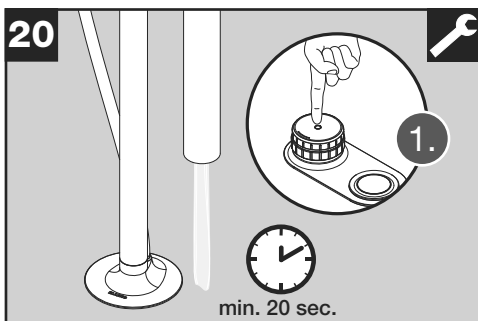
完全打开两个角阀。

注意!
检查所有连接的密封性!

4.4 龙头的首次使用

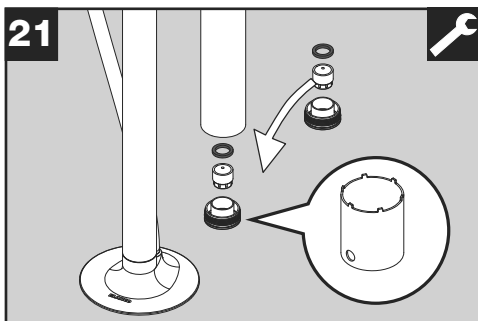


拆下花洒头上的
起泡器 (龙头随附有扳手)。



冲洗龙头和管道, 至少20秒 (热水和冷水)。

2 如何使用龙头您可以在操作说明书中
查找 (说明书序号2)。



停止水流并重新安装起泡器。



请把下列材料递交给饮水系统的拥有者：

- 所有安装和操作说明书（通常是两份文件）
- 龙头起泡器扳手

向用户解释混合水龙头的工作原理。让用户熟悉使用方法，并与他们一起阅读操作说明书（说明书2）。

5. 停止使用

- ▶ 关闭两个角阀。
- ▶ 控制盒上拆下所有线缆。

注意！

断开导水管道/软管时，可能会有少量的水溢出！

- ▶ 松开控制盒与角阀上的所有软管。
- ▶ 拆卸螺母、龙头和控制组件。

6. 龙头的废弃处理

法定义务要求您避免浪费、保护您自身的健康并且保护环境：

- ▶ 将产品送到收集点。切勿将产品作为一般生活垃圾处理。

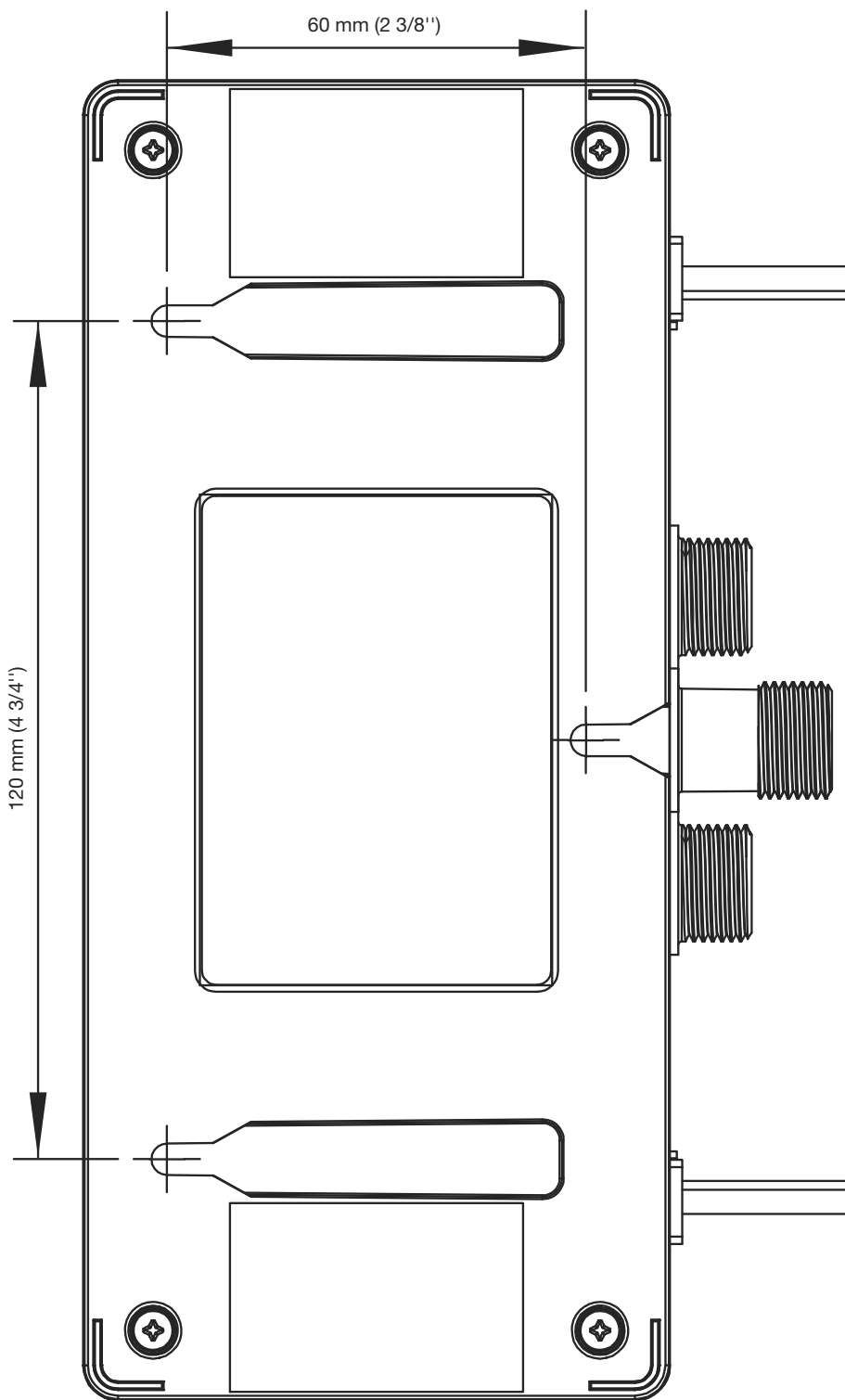


7. 客户服务

如果您有不满，请联系您的经销商或我们的客户服务部门 → 见末页。

更多信息和备件请查看 BLANCO 网络商店：
blanco.com/shop-luneoo







blanco.com/contact-luneoo

BLANCO AUSTRALIA PTY LTD
Service AU
Phone: +61 75 5960 894
blanco@t2services.com.au

铂浪高贸易(上海)有限公司
中国服务商
电话: +86 400-788-2100
info-blancochina@blanco.de